

YAMAHA

PARTS LIST

MODEL TY50'79

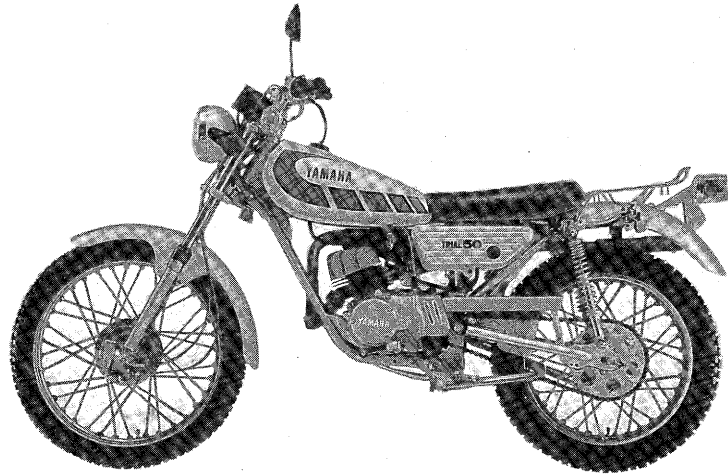
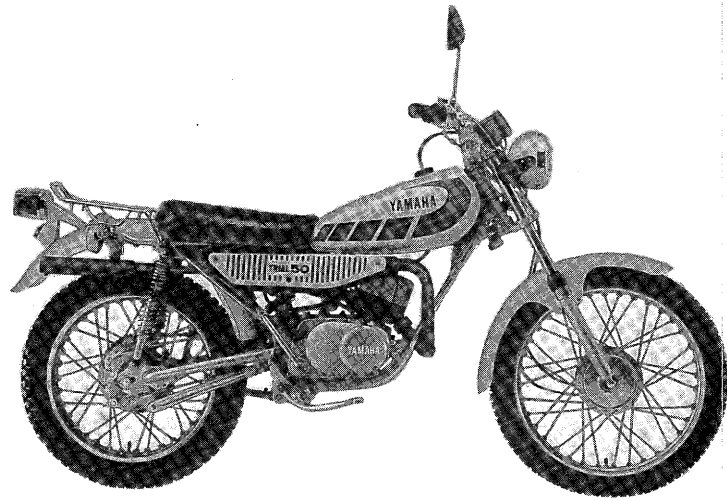
(MODEL CODE 538)

COPY RIGHT: ALL RIGHTS RESERVED

NO PART OF THIS PUBLICATION MAY BE REPRODUCED WITHOUT PERMISSION.

538-28198-K6





FOREWORD

This Parts List is related to the parts in use for the Yamaha TY50'79(538). When you are ordering replacement parts for the TY50'79(538), refer to this Parts List and quote both part numbers and part names correctly.

1. Modifications or additions which have been made after issue of the Parts List will be announced in the Yamaha Parts News.

It is advisable that according to the Yamaha Parts News you make necessary corrections to the Parts List on hand to keep it up-to-date.

2. Abbreviations

The following abbreviations are used in this Parts List.

U.R. Use size (thickness) and/or number as required.

U.N. Use as many as you need.

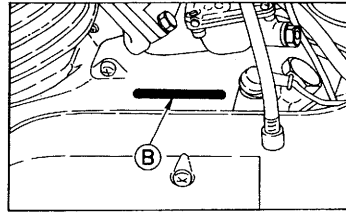
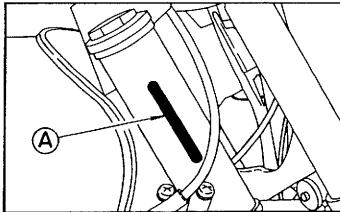
F# Frame No. (Applicable machine No.)

3. Parts, which are to be supplied in the form of assemblies, are listed with an indentation of one letter's space, and a dot (.) is put against the name of each part.

EXAMPLE CARBURETOR ASS'Y
 . JET, pilot
 . NOZZLE, main

4. Initial Serial No. and Color Code

(A) Frame Serial No.	354-652401 and following
(B) Engine Serial No.	354-652401 and following



Color Code	Color Name	Color Code	Color Name
33	Yamaha Black	35	Silver
91	Uni-Chrome Plated	36	Clean White
93	Chrome Plated		
98	Low Gloss Black		
R4	Heat Proof Black		

CONTENTS

ENGINE

Fig. 1	Crankcase · Cylinder	1
Fig. 2	Crankcase Cover	2
Fig. 3	Crank · Piston	3
Fig. 4	Clutch	5
Fig. 5	Transmission	6
Fig. 6	Shifter 1	8
Fig. 7	Shifter 2	9
Fig. 8	Kick Starter	10
Fig. 9	Intake	11
Fig. 10	Carburetor	12
Fig. 11	Exhaust	14
Fig. 12	Oil Pump	15
Fig. 13	Flywheel Magneto	16
Fig. 14	Flywheel Magneto (Exclusive for MOROCCO)	17

CHASSIS

Fig. 15	Frame	18
Fig. 16	Rear Arm · Rear Cushion · Chain Case	19
Fig. 17	Stand · Footrest · Brake Pedal	20
Fig. 18	Front Fender · Rear Fender	21
Fig. 19	Front Fork	22
Fig. 20	Steering	23
Fig. 21	Handle · Wire	24
Fig. 22	Fuel Tank	26
Fig. 23	Oil Tank	28
Fig. 24	Seat	29
Fig. 25	Front Wheel	30
Fig. 26	Rear Wheel	32
Fig. 27	Head Lamp	34

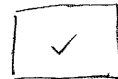
Fig. 28	Speedometer	35
Fig. 29	Tail Lamp	36
Fig. 30	Flasher Lamp	37
Fig. 31	Electrical	38

REPAIR KIT

Fig. 32	Repair Kit	42
---------	------------	----

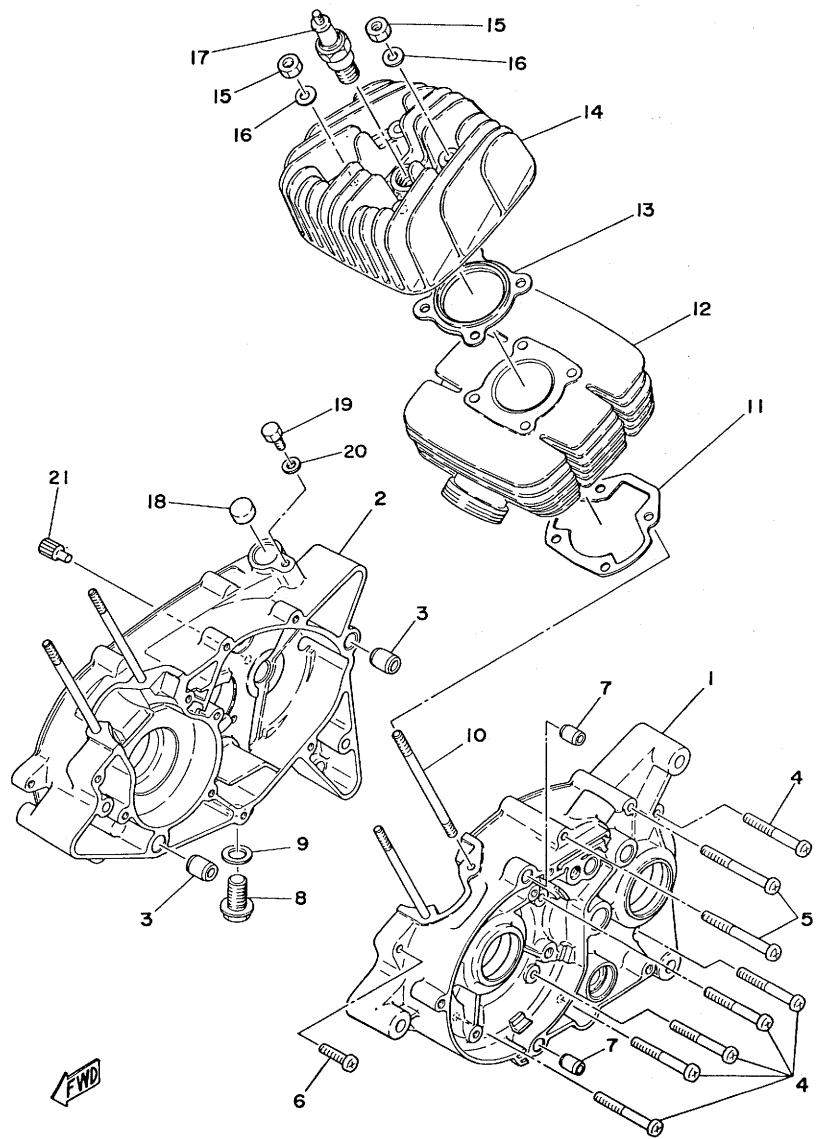
NUMERICAL INDEX

NB



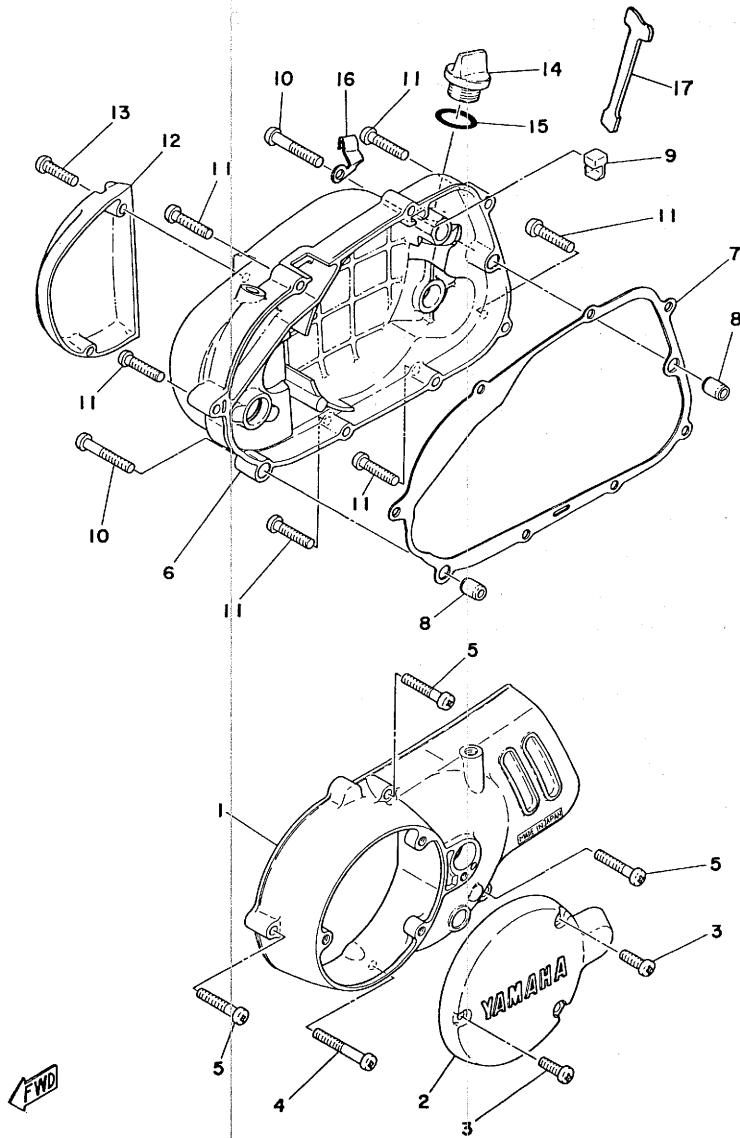
ADD TO TY 50 '77 MODEL FICHE
APPLICABLE TO TY 50 '79 MODEL

Fig. 1 CRANKCASE · CYLINDER



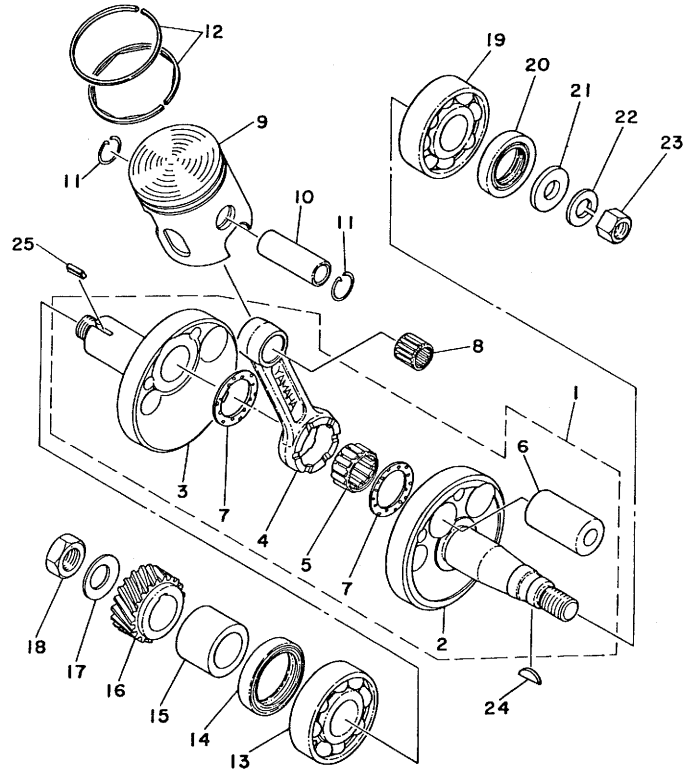
Ref. No.	Parts No.	Description	Qty	Applicable Machine No.	Remarks
1- 1	353-15111-00	CASE, crank left	1		
1- 2	353-15121-02	CASE, crank right	1		
1- 3	91830-22016	PIN, dowel (8.4-12-16)	2		
1- 4	92501-06050	SCREW, panhead	8		
1- 5	92501-06055	SCREW, panhead	2		
1- 6	92501-06025	SCREW, panhead	1		
1- 7	91830-21014	PIN, dowel (6.4-10-15)	2		
1- 8	90340-12005	PLUG (132-15351-00)	1		
1- 9	90430-12038	GASKET (132-15353-00)	1		
1-10	90116-06026	BOLT, stud (109-11361-00)	4		
1-11	353-11351-00	GASKET, cylinder	1		
1-12	353-11311-00	CYLINDER	1		
1-13	517-11181-00	GASKET, cylinderhead	1		
1-14	353-11111-01-94	HEAD, cylinder	1		
1-15	95301-06600	NUT, hexagon	4		
1-16	92901-06200	WASHER, plain	4		
1-17	94701-00040	PLUG, spark (B-7HS)	1		
1-18	90338-16029	PLUG, blind	1		
1-19	97301-06010	BOLT, hexagon	1		
1-20	92901-06200	WASHER, plain	1		
1-21	492-15387-00	✓ STOPPER, change lever	1		

Fig. 2 CRANKCASE COVER



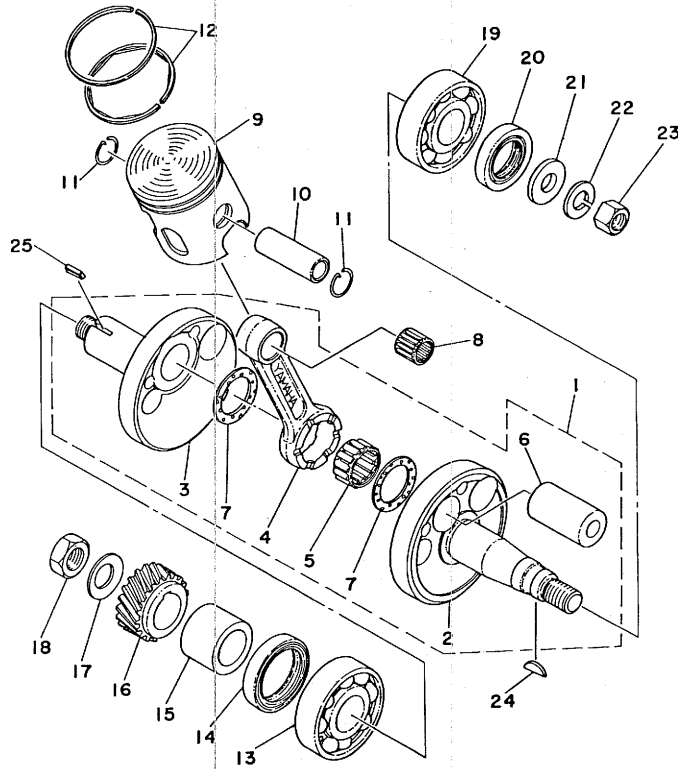
Ref. No.	Parts No.	Description	Q'ty	Applicable Machine No.	Remarks
2- 1	353-15411-00-Y4	COVER, crankcase left	1		Metallic Silver
2- 2	353-15415-00-Y4	COVER, generator	1		Metallic Silver
2- 3	92501-06020	SCREW, panhead	3		
2- 4	92501-06045	SCREW, panhead	1		
2- 5	92501-06030	SCREW, panhead	3		
2- 6	353-15421-00-Y4	COVER, crankcase right	1		Metallic Silver
2- 7	353-15451-00	GASKET, crankcase cover	1		
2- 8	91810-02014	PIN, dowel (6.4-10-14)	2		
2- 9	353-15437-02	SCRAPER, oil	1		
2-10	92501-06040	SCREW, panhead	2		
2-11	92501-06030	SCREW, panhead	7		
2-12	353-15416-00-Y4	COVER, oil pump	1		Metallic Silver
2-13	92501-06025	SCREW, panhead	2		
2-14	353-15362-00	PLUG, oil level	1		
2-15	93210-21190	O-RING (2.6-20.6)	1		
2-16	367-13174-00	HOLDER, oil pipe	1		
2-17	353-15361-00	GAUGE, oil level	1		

Fig. 3 CRANK · PISTON



Ref. No.	Parts No.	Description	Q'ty	Applicable Machine No.	Remarks
3- 1	538-11400-01	CRANK ASS'Y	1		
3- 2	420-11412-00	. CRANK, left	1		
3- 3	420-11422-00	. CRANK, right	1		
3- 4	538-11651-00	. ROD, connecting	1		
3- 5	93310-41809	. BEARING, con-rod big end ...	1		
3- 6	257-11681-00	. PIN, crank	1		
3- 7	90209-18112	. WASHER, plate (132-11685-00) ..	2		
3- 8	93310-11268	BEARING, con-rod small end ...	1		
3- 9	353-11631-31-96	PISTON (STD 39.96mm)	1	U. R.	
	353-11631-31-98	PISTON (STD 39.98mm)			
	353-11631-31-99	PISTON (STD 39.99mm)			
	353-11635-31	PISTON (40.25mm 1st O.S)	1		Alternate Parts
	353-11636-31	PISTON (40.50mm 2nd O.S)	1		Alternate Parts
3-10	517-11633-00	PIN, piston	1		
3-11	93450-13022	CIRCLIP (132-11634-00)	2		
3-12	260-11601-03	PISTON RING SET (STD)	1s		
	260-11601-13	PISTON RING SET (1st O.S)	1s		Alternate Parts
	260-11601-23	PISTON RING SET (2nd O.S)	1s		Alternate Parts
3-13	93306-20418	BEARING (B6204CS)	1		
3-14	93103-28011	OIL SEAL (SW-28-40-8)	1		
3-15	90387-20170	COLLAR (248-16136-00)	1		
3-16	353-16111-01	GEAR, primary drive (19T)	1		
3-17	90208-12015	WASHER (164-16119-00)	1		
3-18	90179-12244	NUT	1		
3-19	93306-20418	BEARING (B6204CS)	1		
3-20	93102-20009	OIL SEAL (SD-20-35-7)	1		
3-21	90201-12535	WASHER, plate	1		
3-22	93901-12100	WASHER, spring	1		
3-23	90170-12175	NUT, hexagon (98801-12200)	1		

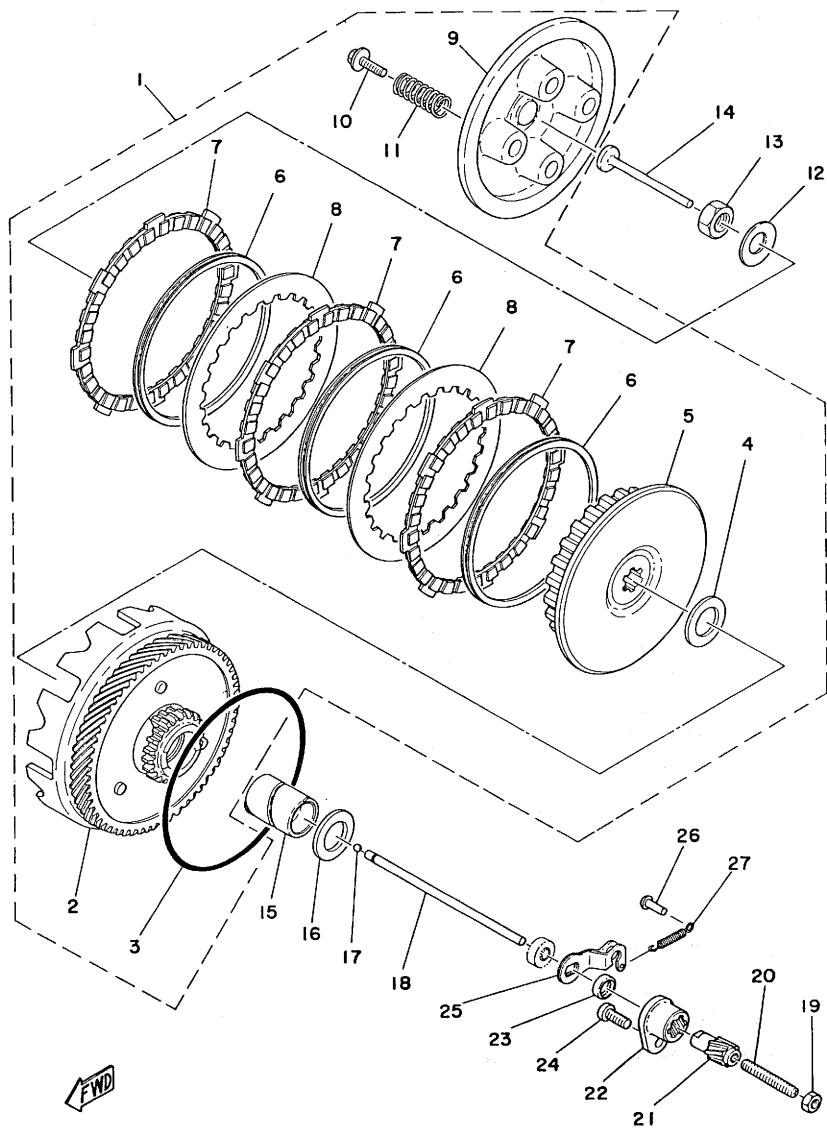
Fig. 3 CRANK · PISTON



Ref. No.	Parts No.	Description	Q'ty	Applicable Machine No.	Remarks
3-24	90280-03017	KEY, woodruff (146-11545-00)	1		
3-25	90282-05005	KEY, straight (353-11546-00)	1		

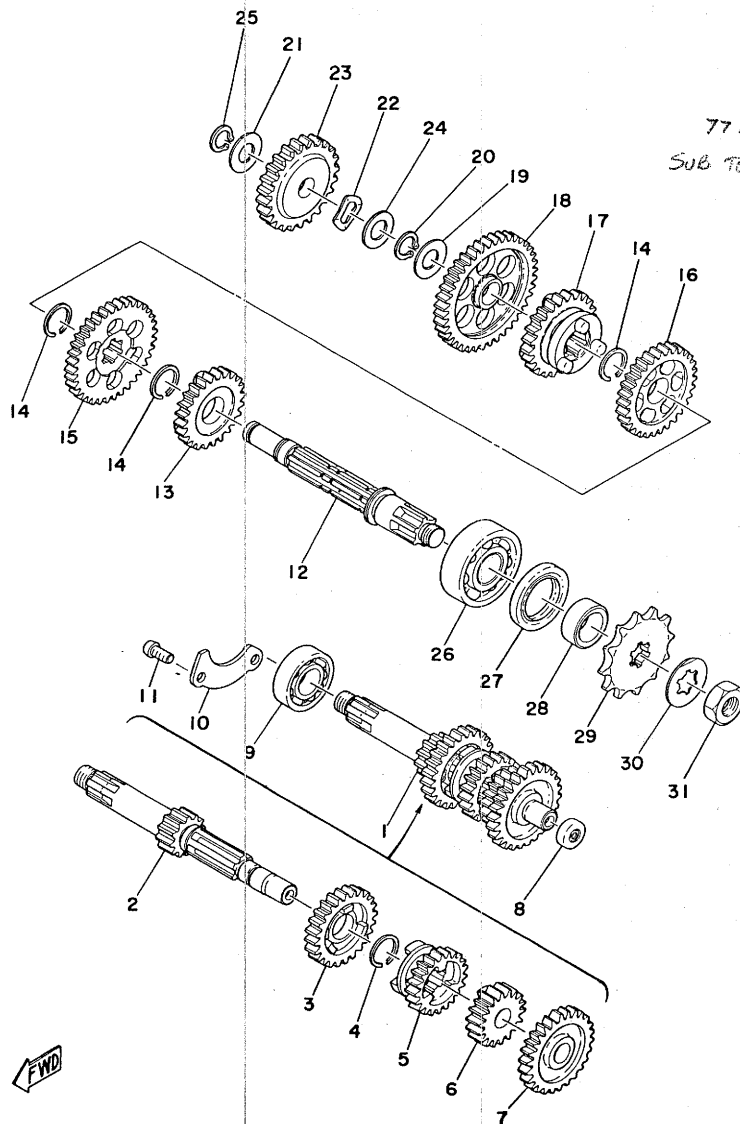
FWD

Fig. 4 CLUTCH



Ref. No.	Parts No.	Description	Q'ty	Applicable Machine No.	Remarks
4- 1	2A3-16301-00	CLUTCH ASS'Y	1		
4- 2	2A3-16150-00	PRIMARY DRIVEN GEAR COMP. (68T)	1		
4- 3	93210-98202	O-RING (5.33-97.76)	1		
4- 4	122-16164-00	PLATE, thrust (17.2-30-2)	1		
4- 5	353-16371-00	BOSS, clutch	1		
4- 6	131-16367-00	RING, cushion	3		
4- 7	131-16321-00	PLATE, friction	3		
4- 8	257-16324-00	PLATE, clutch	2		
4- 9	353-16351-00	PLATE, pressure	1		
4-10	90119-05001	BOLT, hexagon with washer	4		
4-11	90501-20125	SPRING (132-16333-00)	4		
4-12	90208-12015	WASHER (164-16119-00)	1		
4-13	90170-12060	NUT, hexagon (137-16377-00)	1		
4-14	137-16356-00	ROD, push 1	1		
4-15	90560-17123	SPACER (131-16181-01)	1		
4-16	122-16164-00	PLATE, thrust (17.2-30-2)	1		
4-17	93503-16010	BALL (3/16 inch)	1		
4-18	353-16357-00	ROD, push 2	1		
4-19	95301-06700	NUT, hexagon	1		
4-20	90113-06013	BOLT, set (241-16343-00)	1		
4-21	241-16341-01	SCREW, push	1		
4-22	353-16396-00	HOUSING, push screw	1		
4-23	93104-11028	OIL SEAL (SO-10.5-15-3)	1		
4-24	92501-06015	SCREW, panhead	1		
4-25	451-16342-00	LEVER, push	1		
4-26	132-16346-00	HOOK, spring	1		
4-27	90506-07066	SPRING, tension (257-16345-00)	1		

Fig. 5 TRANSMISSION



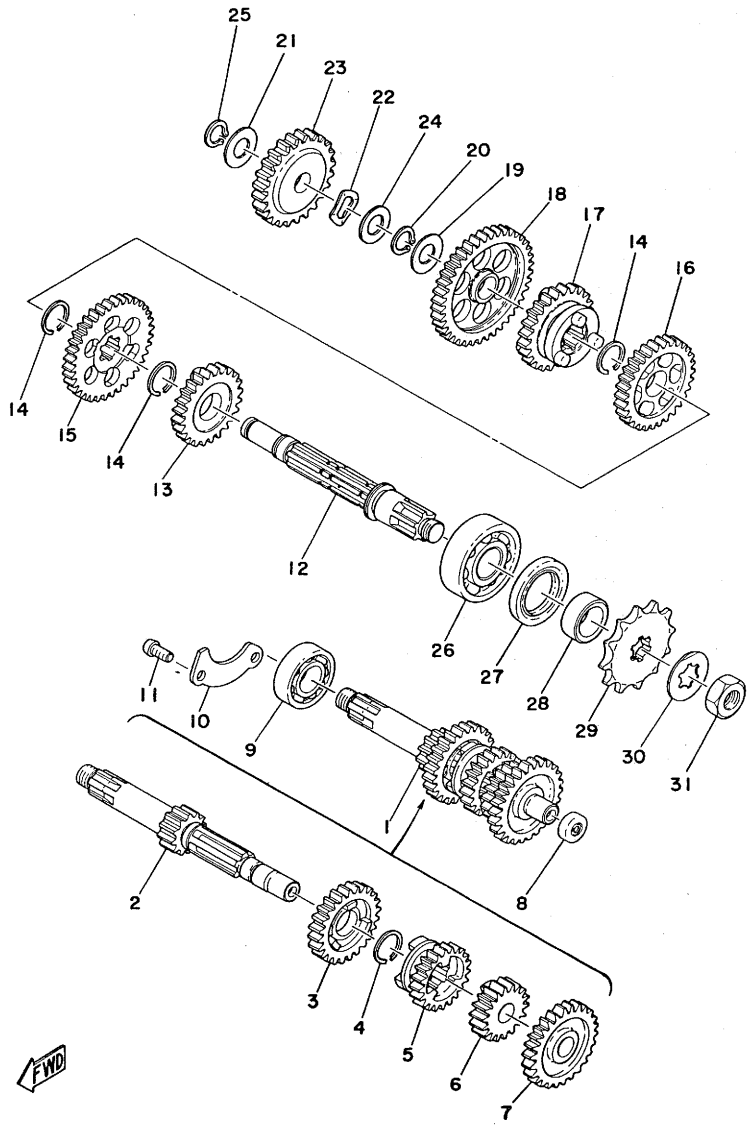
77 LISTS 01
SUB TO 12 ←

↑
AS ABOVE

↑
AS ABOVE

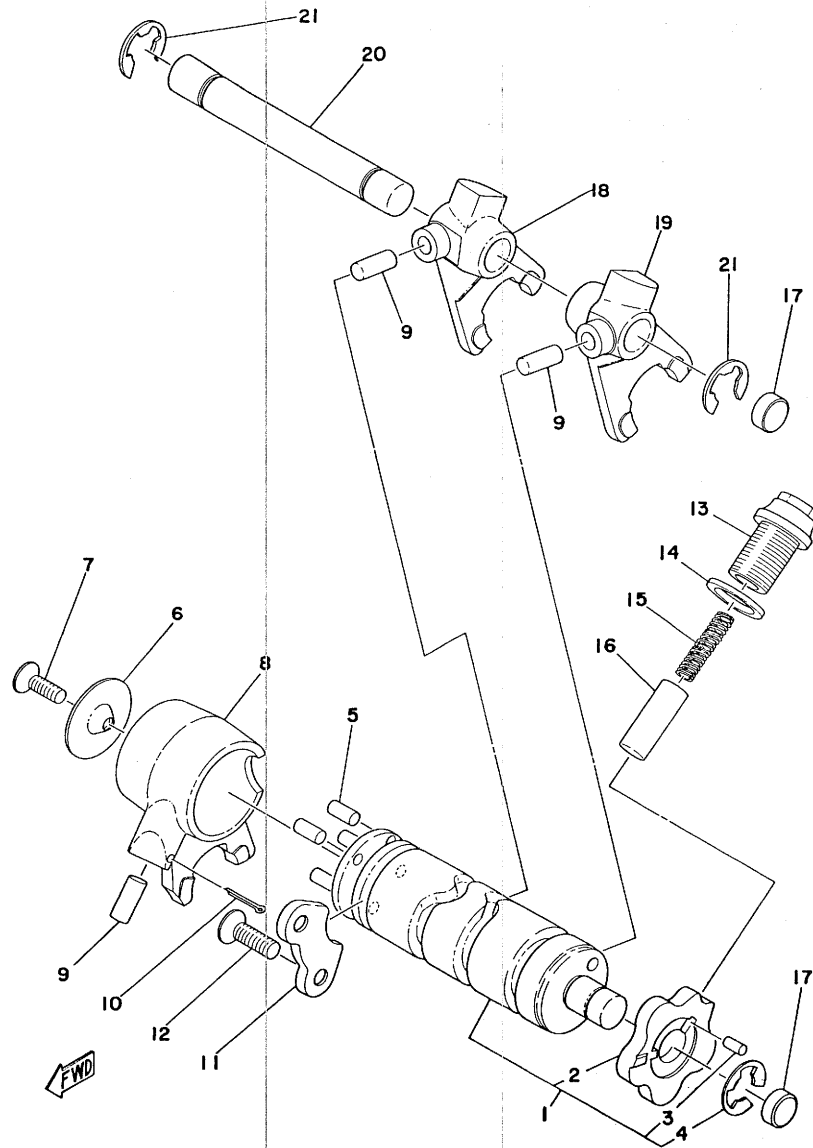
Ref. No.	Parts No.	Description	Qty	Applicable Machine No.	Remarks
5- 1	353-17410-10	MAIN AXLE COMP.	1		
5- 2	353-17411-10	. AXLE, main (12T)	1		
5- 3	353-17141-12 ✓	. GEAR, 4th pinion (24T)	1		
5- 4	93440-16030	. CIRCLIP (257-17414-00)	1		
5- 5	353-17131-00	. GEAR, 3rd pinion (21T)	1		
5- 6	353-17121-11 ✓	. GEAR, 2nd pinion (17T)	1		
5- 7	353-17151-00	. GEAR, 5th pinion (26T)	1		
5- 8	257-15389-00	SEAL, push rod	1		
5- 9	93306-20303	BEARING (B6203Z)	1		
5-10	353-17471-00	PLATE, bearing cover	1		
5-11	92501-06012	SCREW, panhead	2		
5-12	598-17421-00	AXLE, drive	1		
5-13	353-17251-00	GEAR, 5th wheel (25T)	1		
5-14	93440-16030	CIRCLIP (257-17414-00)	3		
5-15	353-17221-00	GEAR, 2nd wheel (34T)	1		
5-16	353-17231-00	GEAR, 3rd wheel (30T)	1		
5-17	353-17241-00	GEAR, 4th wheel (27T)	1		
5-18	353-17211-01 ✓	GEAR, 1st wheel (39T)	1		
5-19	257-17219-00	SHIM (13.2-24-0.6)	1		
5-20	93410-13004	CIRCLIP (S-13)	1		
5-21	90201-13202	WASHER, plate (201-15653-00)	1		
5-22	90206-15021	WASHER, wave (137-15643-00)	1		
5-23	353-15651-00	GEAR, kick idel (25T)	1		
5-24	102-18137-00-10	WASHER, change shaft	1		
5-25	93410-12003	CIRCLIP (S-12)	1		
5-26	93306-30301	BEARING (B6303)	1		
5-27	93102-25017	OIL SEAL (SD-25-40-5)	1		
5-28	90387-17137	COLLAR (257-17462-00)	1		

Fig. 5 TRANSMISSION



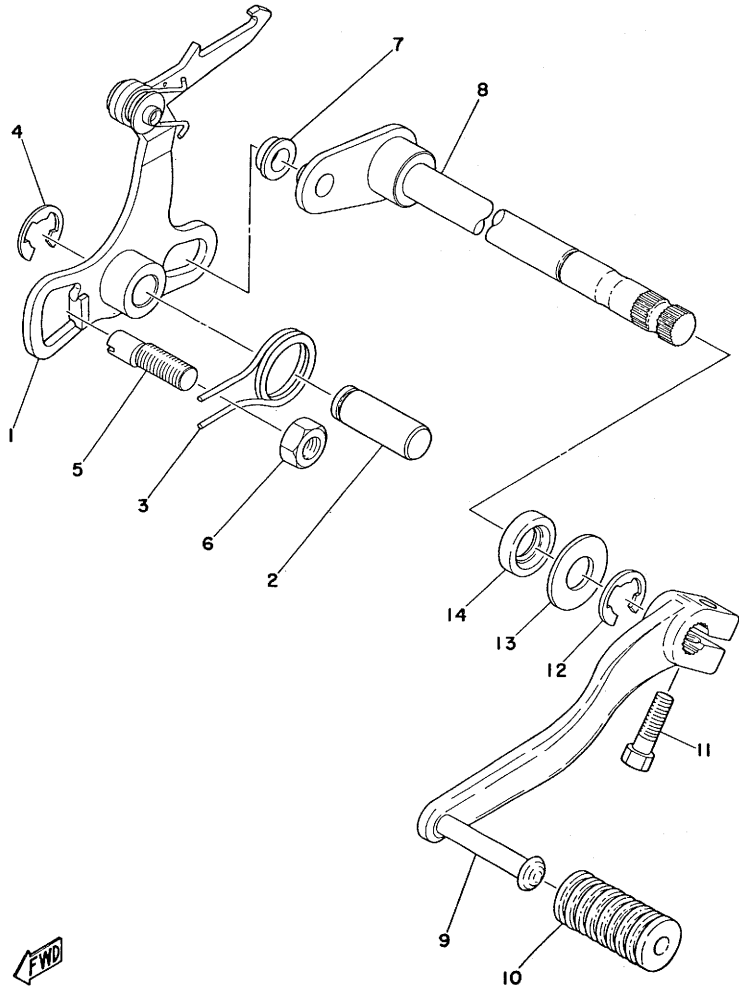
Ref. No.	Parts No.	Description	Q'ty	Applicable Machine No.	Remarks
5-29	257-17461-11	SPROCKET, drive (11T)	1		
	257-17461-21	SPROCKET, drive (12T)	1	U.R	STD
	257-17461-31	SPROCKET, drive (13T)	1		
5-30	90215-13019	WASHER, lock (257-17464-00) ..	1		
5-31	90179-12181	NUT, lock	1		

Fig. 6 SHIFTER 1



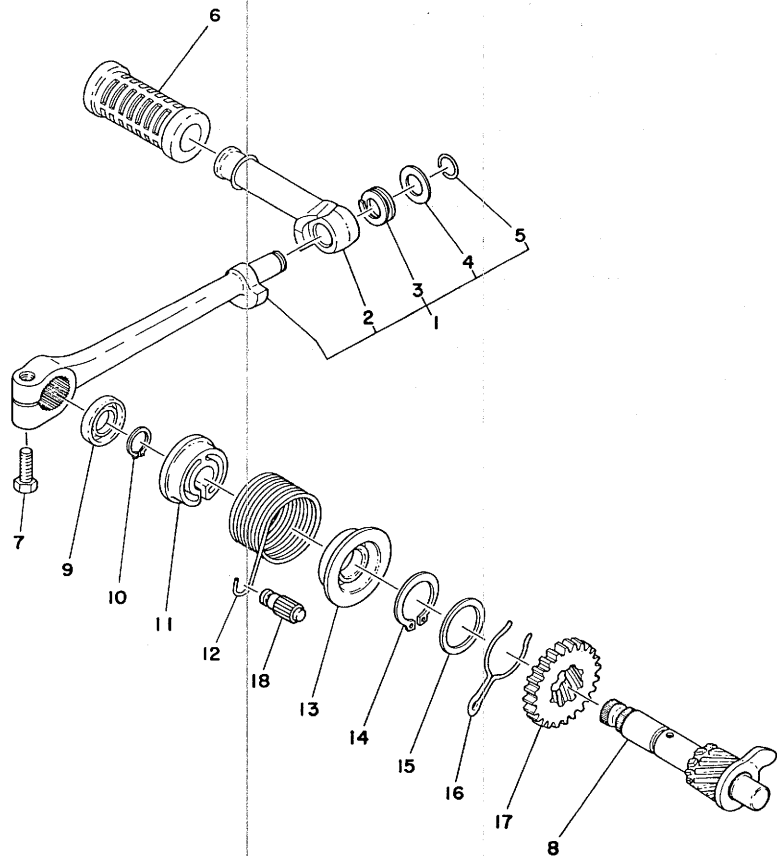
Ref. No.	Parts No.	Description	Q'ty	Applicable Machine No.	Remarks
6- 1	353-18540-01	SHIFT CAM ASS'Y	1		
6- 2	353-18141-01	. PLATE, stopper	1		
6- 3	93604-08071	. PIN, dowel (4-8)	1		
6- 4	93440-12026	. CIRCLIP (12φ)	1		
6- 5	93604-10011	PIN, dowel (4-10)	4		
6- 6	214-18561-00	PLATE, side	1		
6- 7	98701-05012	SCREW, flathead	1		
6- 8	353-18511-01	FORK, shift 1	1		
6- 9	93606-14081	PIN, dowel (6-14.2)	3		
6-10	91401-25017	PIN, cotter	1		
6-11	353-18562-00	PLATE, stopper 2	1		
6-12	92701-06012	SCREW, flathead	2		
6-13	90109-14485	BOLT, hexagon	1		
6-14	137-15353-00	GASKET (14-21-15)	1		
6-15	90501-09292	SPRING, compression	1		
6-16	353-18547-00	STOPPER, cam	1		
6-17	90334-12009	PLUG, straight (296-15385-00)	2		
6-18	353-18512-01	FORK, shift 2	1		
6-19	353-18513-01	FORK, shift 3	1		
6-20	214-18531-00	BAR, shift fork guide	1		
6-21	93430-10016	CIRCLIP (E-10)	2		

Fig. 7 SHIFTER 2



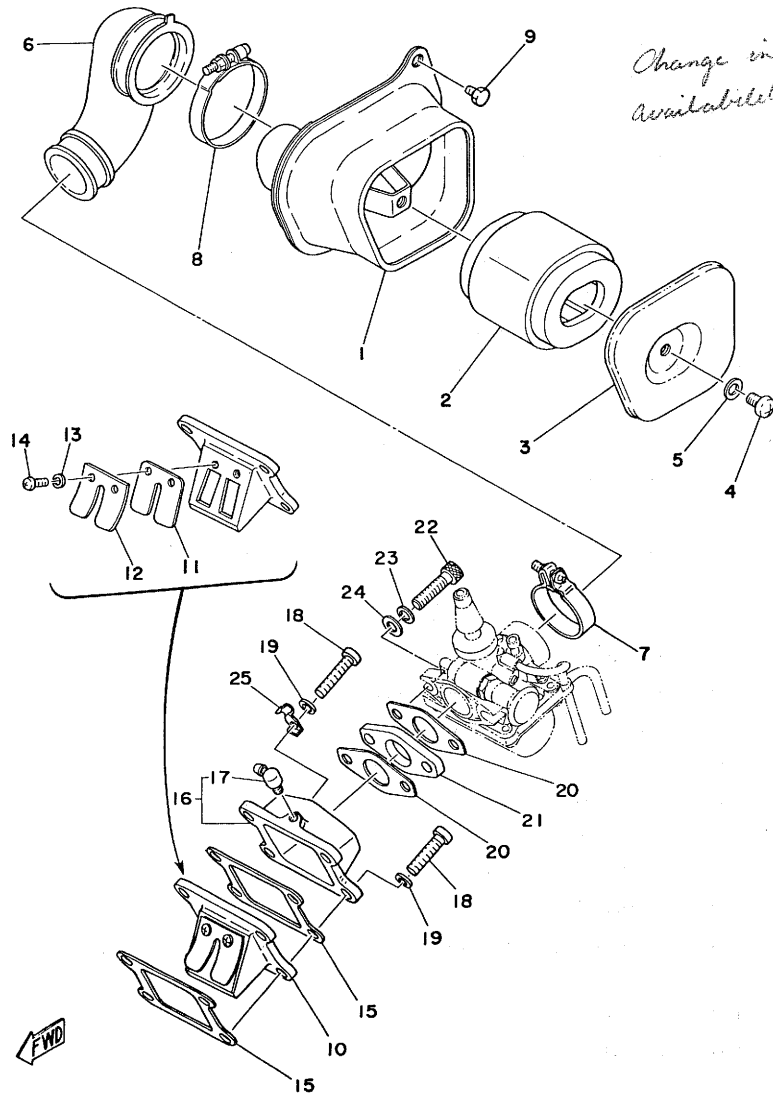
Ref. No.	Parts No.	Description	Q'ty	Applicable Machine No.	Remarks
7- 1	353-18120-00	CHANGE LEVER ASS'Y	1		
7- 2	367-18197-00	SHAFT	1		
7- 3	90508-32054	SPRING, torsion (353-18124-00)	1		
7- 4	93430-10016	CIRCLIP (E-10)	1		
7- 5	90149-08094	SCREW, adjusting	1		
7- 6	95301-08600	NUT, hexagon	1		
7- 7	214-18178-00	ROLLER, change lever	1		
7- 8	353-18101-00	CHANGE SHAFT ASS'Y	1		
7- 9	353-18111-00-93	PEDAL, change	1		
7-10	132-18113-01	COVER, change pedal	1		
7-11	97321-06020	BOLT, hexagon	1		
7-12	93430-10016	CIRCLIP (E-10)	1		
7-13	90201-12575	WASHER, plate	1		
7-14	93101-12004	OIL SEAL (S-12-22-5)	1		

Fig. 8 KICK STARTER



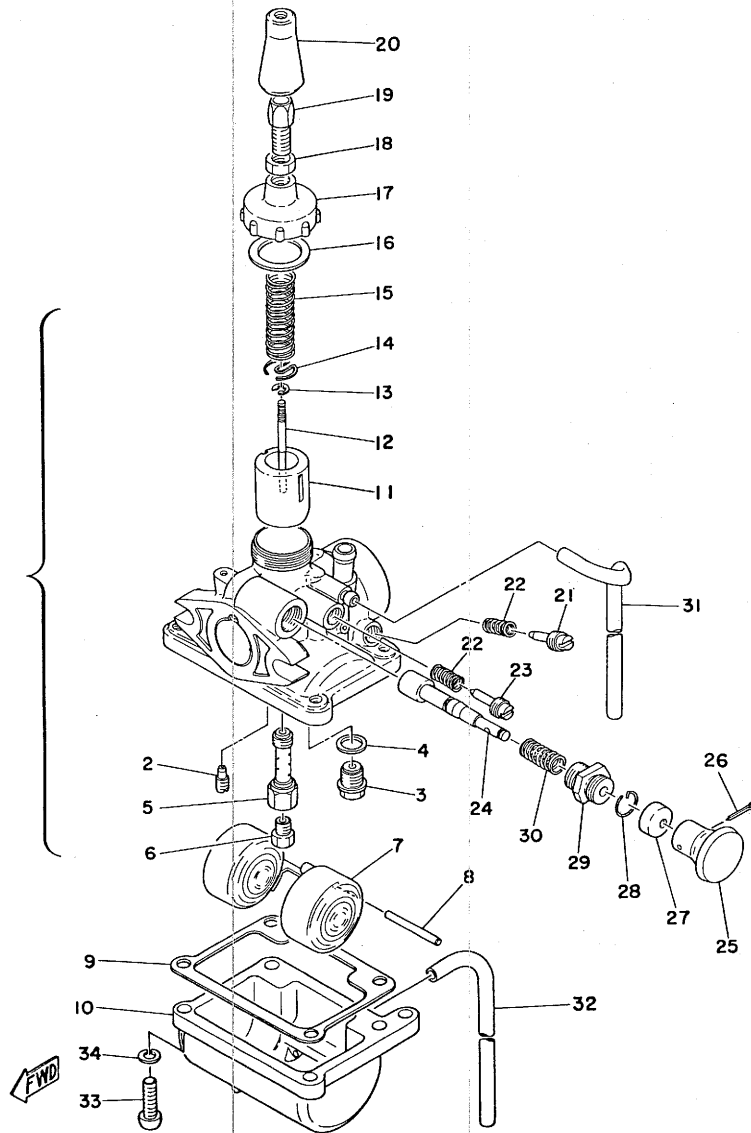
Ref. No.	Parts No.	Description	Q'ty	Applicable Machine No.	Remarks
8- 1	276-15610-01-93	KICK CRANK ASS'Y	1		
8- 2	122-15612-02	. LEVER, kick	1		
8- 3	90504-18005	. SPRING (132-15625-01)	1		
8- 4	90209-10108	. WASHER (132-15616-01)	1		
8- 5	93440-10028	. CIRCLIP (132-15617-00)	1		
8- 6	156-15618-01	COVER, kick lever	1		
8- 7	97311-06025	BOLT, hexagon	1		
8- 8	353-15660-02	KICK AXLE ASS'Y	1		
8- 9	93109-15001	OIL SEAL (SDO-15-26-6)	1		
8-10	93410-15005	CIRCLIP (S-15)	1		
8-11	132-15676-01	COVER, kick spring	1		
8-12	90508-26136	SPRING, torsion (304-15665-00)	1		
8-13	132-15664-01	GUIDE, kick spring	1		
8-14	93410-25017	CIRCLIP (S-25)	1		
8-15	117-15644-00	SHIM (25.1-32-1)	1		
8-16	90468-26038	CIRCLIP (353-15687-00)	1		
8-17	353-15641-00	GEAR, kick (26T)	1		
8-18	248-15668-00	STOPPER, kick spring	1		

Fig. 9 INTAKE



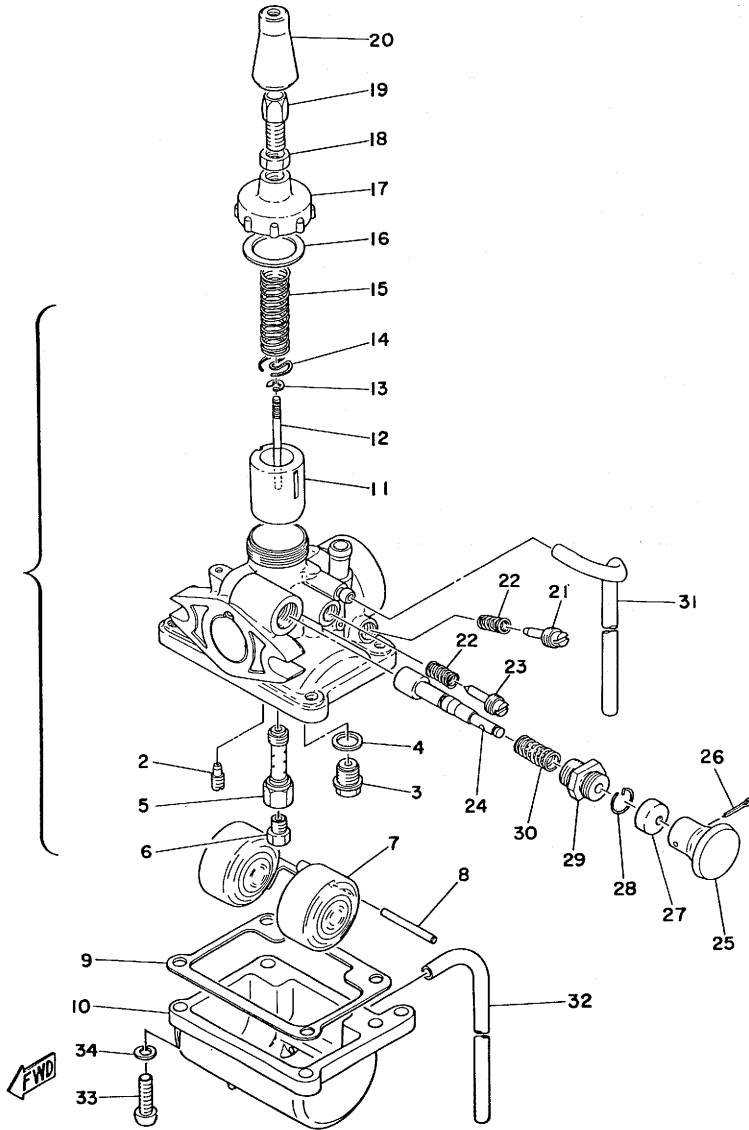
Ref. No.	Parts No.	Description	Q'ty	Applicable Machine No.	Remarks
9- 1	538-14411-01	CASE, air cleaner	1		
9- 2	367-14451-01	ELEMENT, air cleaner	1		
9- 3	538-14412-01	CAP, cleaner case	1		
9- 4	92501-06010	SCREW, panhead	1		
9- 5	92901-06200	WASHER, plain	1		
9- 6	538-14453-01	JOINT, air cleaner	1		
9- 7	90460-33087	CLAMP, hose	1		
9- 8	90460-49034	CLAMP, hose	1		
9- 9	97301-06010	BOLT, hexagon	2		
9-10	353-13610-01	REED VALVE ASS'Y	1		
9-11	314-13613-00	. VALVE, reed	1		
9-12	314-13616-01	. STOPPER, reed valve	1		
9-13	92901-03100	. WASHER, spring	2		
9-14	98512-03008	. SCREW, panhead	2		
9-15	353-13621-00	PACKING, valve seat	2		
9-16	353-13565-00	JOINT	1		
9-17	278-13552-02	. NOZZLE	1		
9-18	92501-06025	SCREW, panhead	4		
9-19	92901-06100	WASHER, spring	4		
9-20	353-13556-00	GASKET	2		
9-21	353-13555-00	JOINT	1		
9-22	91316-06025	BOLT, hexagon	2		
9-23	92901-06100	WASHER, spring	2		
9-24	92901-06200	WASHER, plain	2		
9-25	367-15378-00	HOLDER	1		

Fig. 10 CARBURETOR



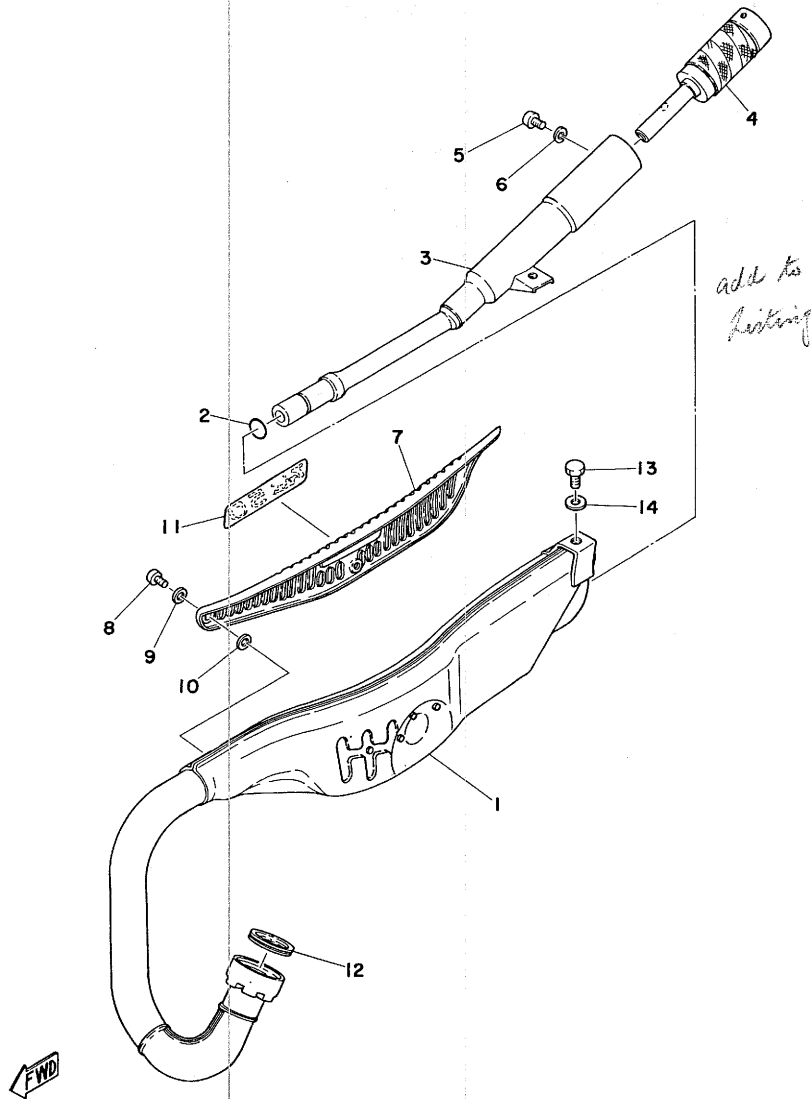
Ref. No.	Parts No.	Description	Q'ty	Applicable Machine No.	Remarks
10- 1	538-14101-00	CARBURETOR ASS'Y	1		
10- 2	260-14142-20	. JET, pilot (#20)	1		
10- 3	353-14190-12	. VALVE SEAT ASS'Y (#1.2)	1		
10- 4	127-14195-00	. WASHER, valve seat	1		
10- 5	439-14141-12	. NOZZLE, main (E-4)	1		
10- 6	127-14143-24	. JET, main (#120)	1	U.R	STD
	127-14143-25	. JET, main (#125)			
	127-14143-26	. JET, main (#130)			
10- 7	353-14185-01	. FLOAT	1		
10- 8	353-14186-00	. PIN, float	1		
10- 9	353-14184-00	. GASKET, float chamber	1		
10-10	353-14181-06	. BODY, float chamber	1		
10-11	353-14112-20	. VALVE, throttle (#2.0)	1		
10-12	134-14116-03	. NEEDLE (3D3-2)	1		
10-13	353-14137-00	. CLIP	1		
10-14	439-14136-01	. SEAT, spring	1		
10-15	353-14131-00	. SPRING, throttle valve	1		
10-16	353-14126-00	. PACKING	1		
10-17	353-14158-00	. TOP, mixing chamber	1		
10-18	802-14161-00	. NUT, wire adjusting	1		
10-19	127-14124-20	. SCREW, wire adjusting	1		
10-20	802-14169-00	. CAP	1		
10-21	353-14123-00	. SCREW, air adjusting	1		
10-22	127-14134-00	. SPRING, air adjusting	2		
10-23	102-14122-00	. SCREW, throttle	1		
10-24	304-14171-00	. PLUNGER, starter	1		
10-25	304-14261-00	. HOLDER	1		
10-26	91401-16015	. PIN, cotter	1		
10-27	132-14173-00	. COVER, plunger cap	1		

Fig. 10 CARBURETOR



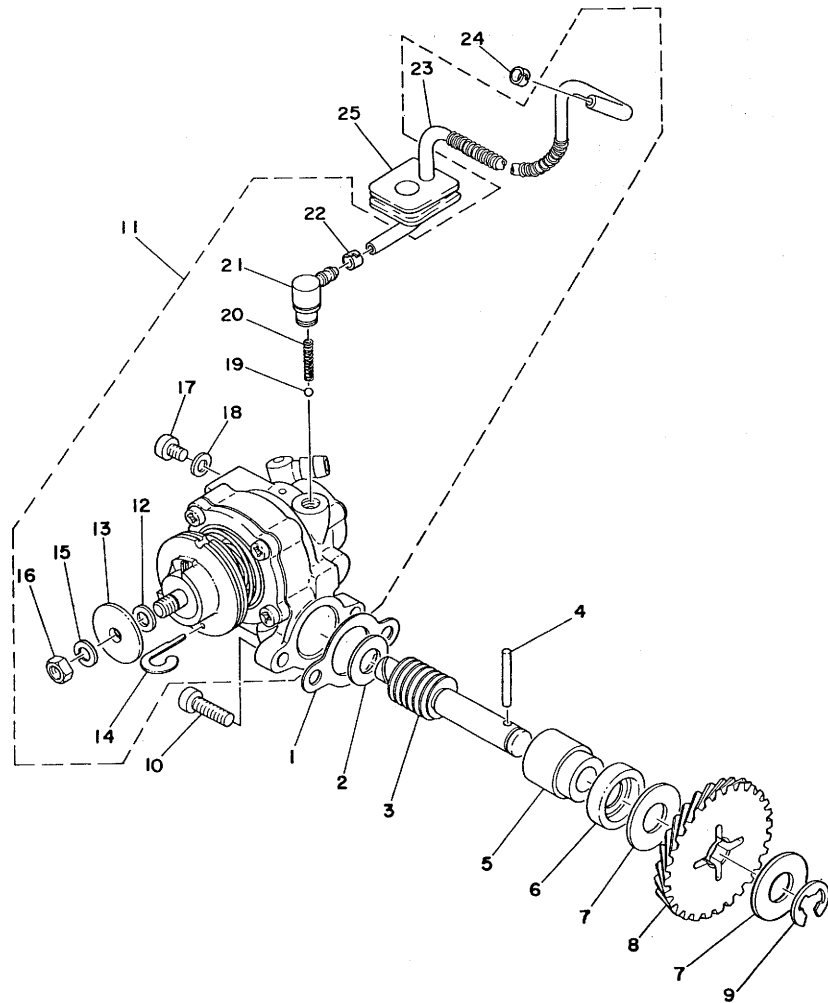
Ref. No.	Parts No.	Description	Q'ty	Applicable Machine No.	Remarks
10-28	353-14138-00	. CLIP, plunger	1		
10-29	152-14174-00	. CAP, plunger	1		
10-30	156-14135-00	. SPRING, plunger	1		
10-31	183-14197-01	. PIPE, air vent (3-220)	1		
10-32	183-14196-00	. PIPE, over flow (3-160)	1		
10-33	98502-04014	. SCREW, panhead	4		
10-34	92901-04100	. WASHER, spring	4		

Fig. 11 EXHAUST



Ref. No.	Parts No.	Description	Qty	Applicable Machine No.	Remarks
11- 1	538-14610-00	EXHAUST PIPE ASS'Y	1		
11- 2	93210-16290	O-RING (3.1-16.0)	1		
11- 3	538-14753-01	SILENCER	1		
11- 4	538-14752-00	PIPE, outlet	1		
11- 5	92501-06010	SCREW, panhead	1		
11- 6	92901-06100	WASHER, spring	1		
11- 7	538-14718-00-36	PROTECTOR, muffler	1		Clean White
11- 8	98903-06010	SCREW, bind	3		
11- 9	90202-06010	WASHER, plate (178-14766-00)	3		
11-10	90202-05005	WASHER, plate (214-14766-00)	3		
11-11	538-21737-00	EMBLEM	1		
11-12	132-14613-00	GASKET, exhaust pipe	1		
11-13	97301-08016	BOLT, hexagon	2		
11-14	92901-08600	WASHER, plate	2		

Fig. 12 OIL PUMP

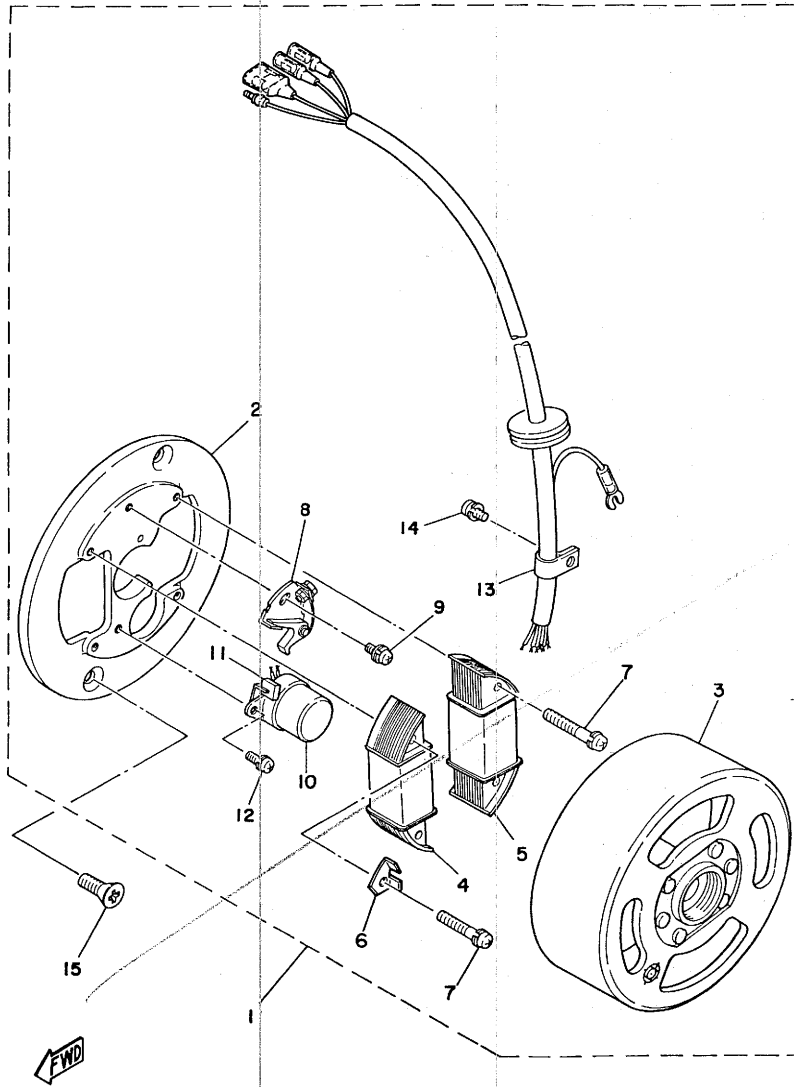


Ref. No.	Parts No.	Description	Qty	Applicable Machine No.	Remarks
12- 1	126-13116-00	GASKET, pump case	1		
12- 2	90201-08624	WASHER, plate	1		
12- 3	257-13175-00	SHAFT, worm	1		
12- 4	93603-22028	PIN, dowel (3-22)	1		
12- 5	137-13176-00	METAL, worm shaft outer	1		
12- 6	93101-10001	OIL SEAL (S-10-21-5)	1		
12- 7	90201-10135	WASHER, plate (102-18138-00)	2		
12- 8	353-13178-00	GEAR, drive (28T)	1		
12- 9	93430-08006	CIRCLIP	1		
12-10	98501-05016	SCREW, panhead	2		
12-11	1K8-13101-01	OIL PUMP ASS'Y	1		
12-12	137-13137-00-03	. SHIM, plunger (5.8-10-0.3)	1	U.R	1
	137-13137-00-05	. SHIM, plunger (5.8-10-0.5)			
	137-13137-00-10	. SHIM, plunger (5.8-10-1.0)			
12-13	137-13138-01	. PLATE, adjusting	1		
12-14	367-13146-01	. COVER, adjust pulley	1		
12-15	92901-05100	. WASHER, spring	1		
12-16	95301-05600	. NUT, hexagon	1		
12-17	98901-04008	. SCREW, bind	1		
12-18	90430-04004	. GASKET (137-13187-00)	1		
12-19	93505-32002	. BALL (5/32 inch)	1		
12-20	90501-02217	. SPRING, check ball	1		
12-21	353-13552-01	. NOZZLE	1		
12-22	90468-02033	. CLIP (214-13164-00)	1		
12-23	90445-05217	. HOSE (353-13161-00)	1		
12-24	90468-02033	CLIP (214-13164-00)	1		
12-25	248-13174-00	HOLDER, oil pipe	1		

FRONT

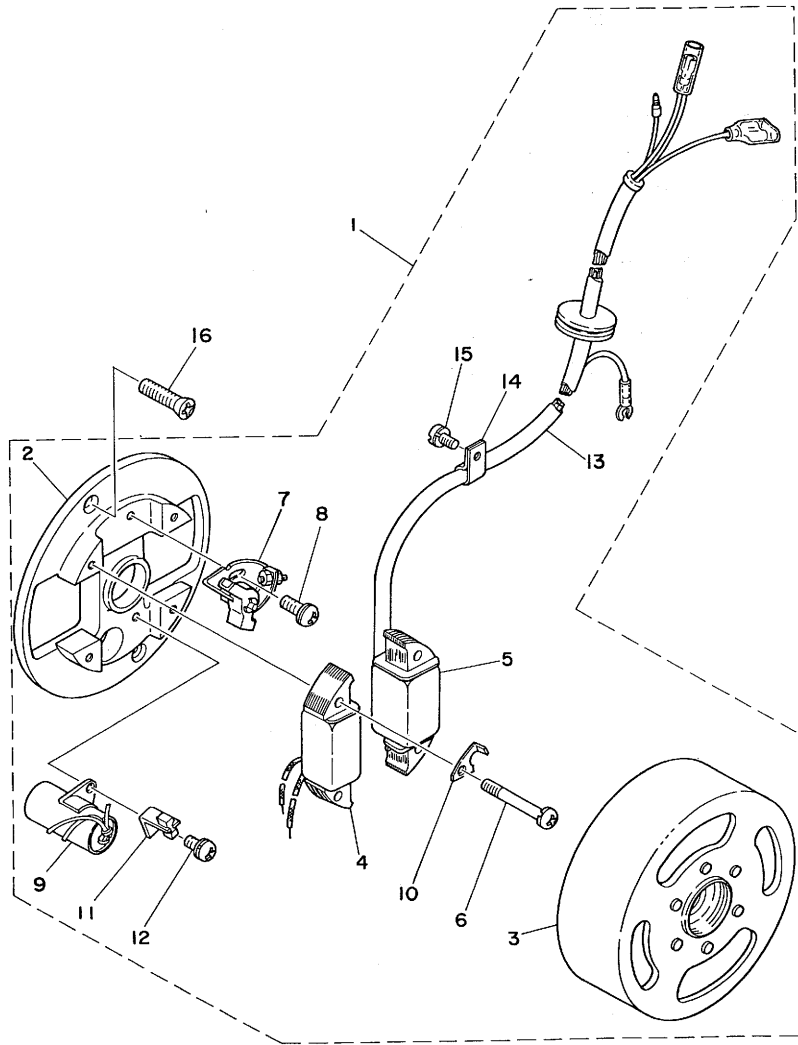
Fig. 13 FLYWHEEL MAGNETO

NOT FOR R.S.A



Ref. No.	Parts No.	Description	Q'ty	Applicable Machine No.	Remarks
13- 1	1K8-81300-10	FLYWHEEL MAGNETO ASS'Y	1		Hitachi
13- 2	296-81309-10	. BASE, magneto	1		
13- 3	1K8-81350-10	. ROTOR ASS'Y	1		
13- 4	368-81311-10	. COIL, source	1		
13- 5	1K8-81313-10	. COIL, lighting	1		
13- 6	296-81332-10	. PLATE, timing	1		
13- 7	110-81348-21	. SCREW, panhead (4-25)	4		
13- 8	207-81321-11	. CONTACT BREAKER ASS'Y	1		
13- 9	110-81346-21	. SCREW, panhead (4-10)	1		
13-10	207-81326-10	. CONDENSER	1		
13-11	207-81331-10	. LUBRICATOR	1		
13-12	110-81347-21	. SCREW, panhead (4-10)	1		
13-13	368-81328-10	. CLAMP, lead	1		
13-14	110-81345-21	. SCREW, panhead	1		
13-15	98701-05015	. SCREW, flathead	2		

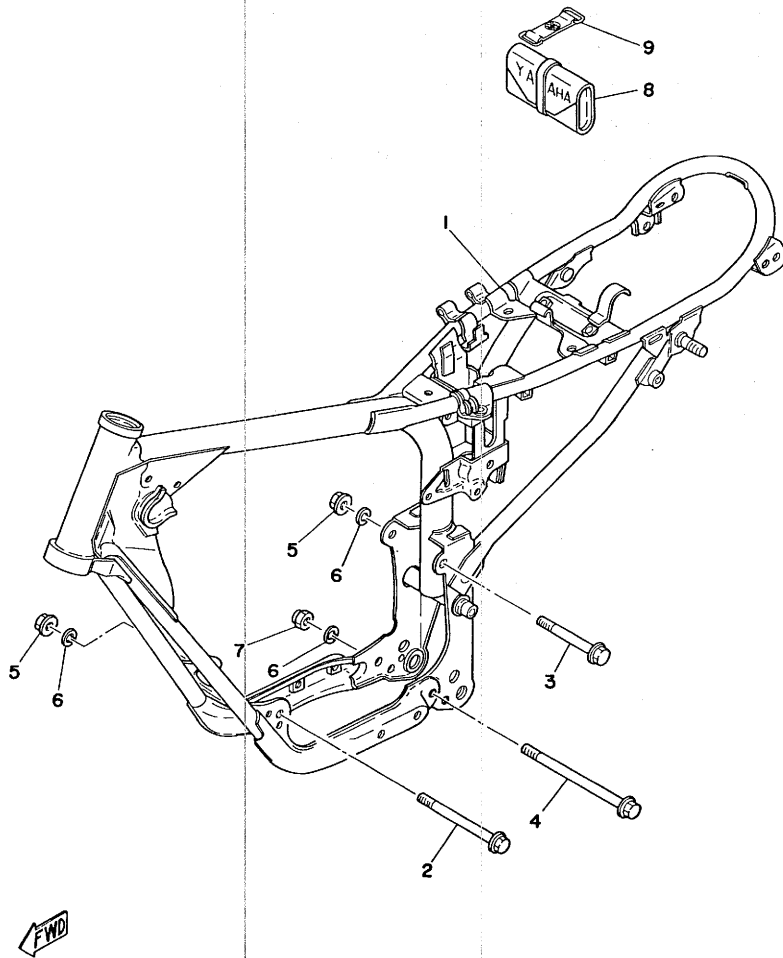
Fig. 14 FLYWHEEL MAGNETO (EXCLUSIVE FOR MOROCCO)



* FOR '79 MODEL

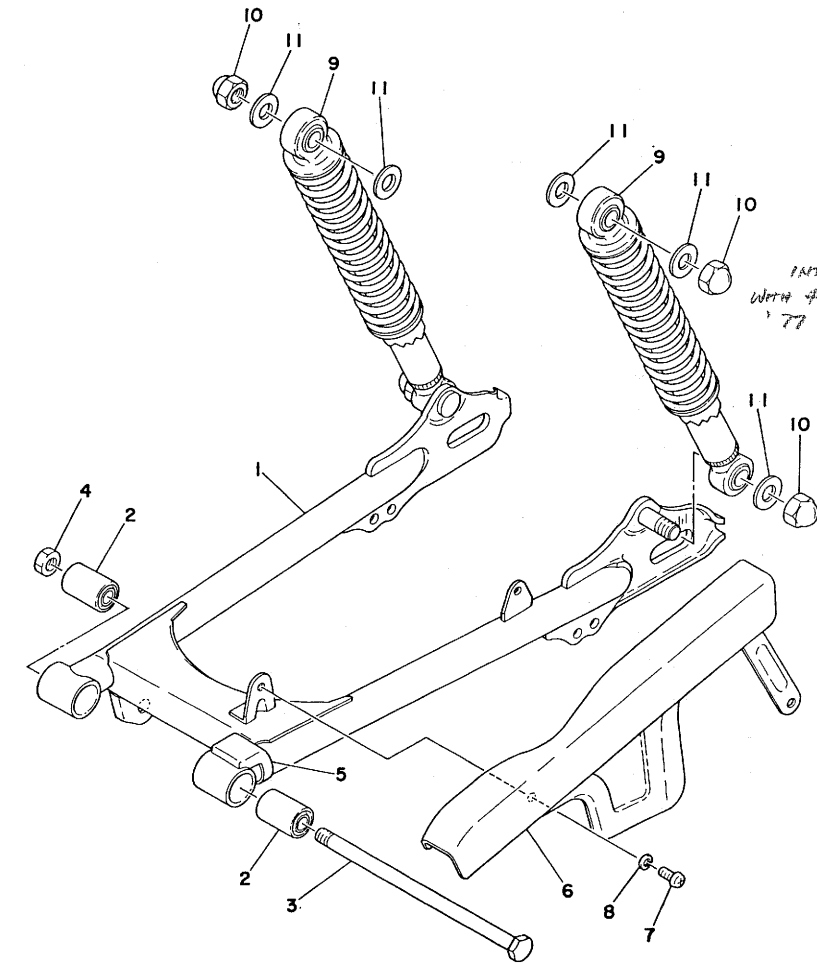
Ref. No.	Parts No.	Description	Q'ty	Applicable Machine No.	Remarks
14- 1	353-81300-21	FLYWHEEL MAGNETO ASS'Y	1		Mitsubishi for Morocco
14- 2	296-81309-20	. BASE, magneto	1		
14- 3	353-81350-20	. ROTOR ASS'Y	1		
14- 4	296-81312-21	. COIL, source	1		
14- 5	353-81313-20	. COIL, lighting	1		
14- 6	110-81348-21	. SCREW, panhead (4-25)	4		
14- 7	437-81321-20	. CONTACT BREAKER ASS'Y	1		
14- 8	110-81346-21	. SCREW, panhead (4-10)	1		
14- 9	296-81325-20	. CONDENSER	1		
14-10	296-81332-20	. PLATE, timing	1		
14-11	116-81331-20	. LUBRICATOR	1		
14-12	110-81347-21	. SCREW, panhead (4-10)	1		
14-13	353-81315-20	. LEAD WIRE ASS'Y	1		
14-14	104-81328-20	. CLAMP, lead	1		
14-15	110-81345-21	. SCREW, panhead (4-6)	1		
14-16	98701-05015	SCREW, flathead	2		

Fig. 15 FRAME



Ref. No.	Parts No.	Description	Q'ty	Applicable Machine No.	Remarks
15- 1	538-21110-01-35	FRAME COMP.	1		Silver
15- 2	95821-08120	BOLT, flange	1		
15- 3	95821-08090	BOLT, flange	1		
15- 4	95811-08155	BOLT, flange	1		
15- 5	95701-08100	NUT, flange	2		
15- 6	92901-08100	WASHER, spring	3		
15- 7	95601-08100	NUT, U	1		
15- 8	353-28100-11	TOOL ASS'Y	1		
15- 9	288-21376-00	BAND, tool	1		

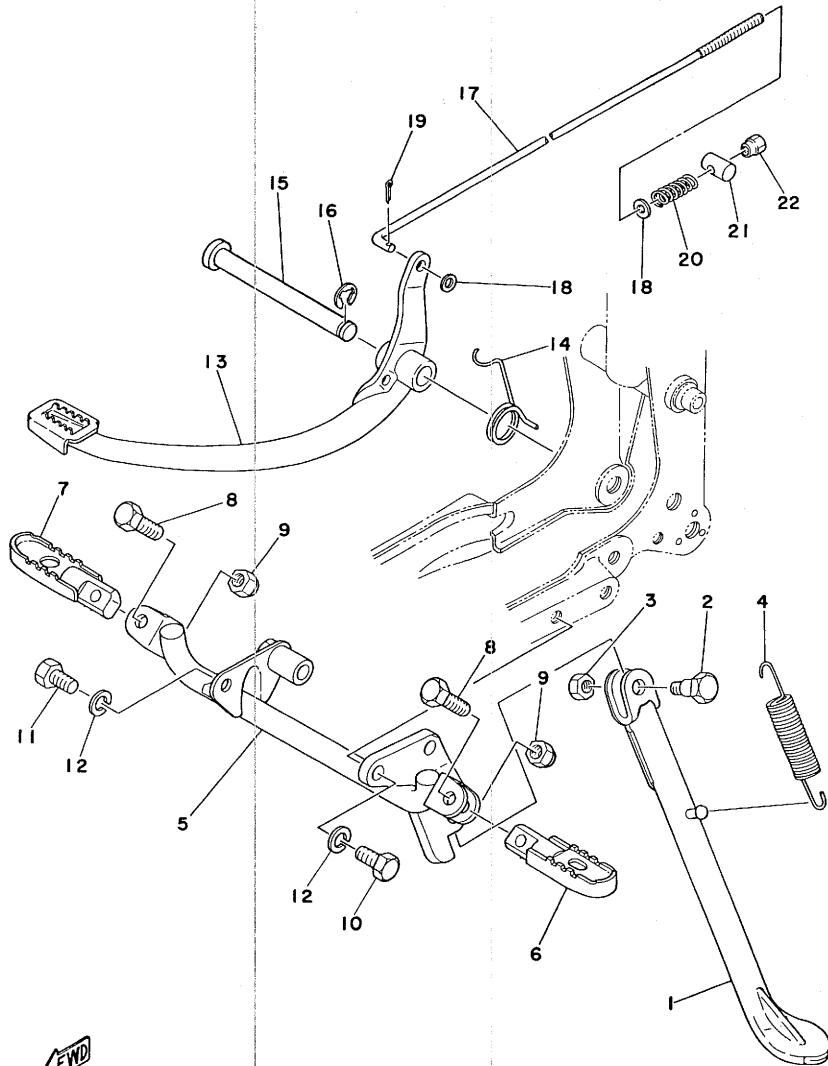
Fig. 16 REAR ARM · REAR CUSHION · CHAIN CASE



FWD

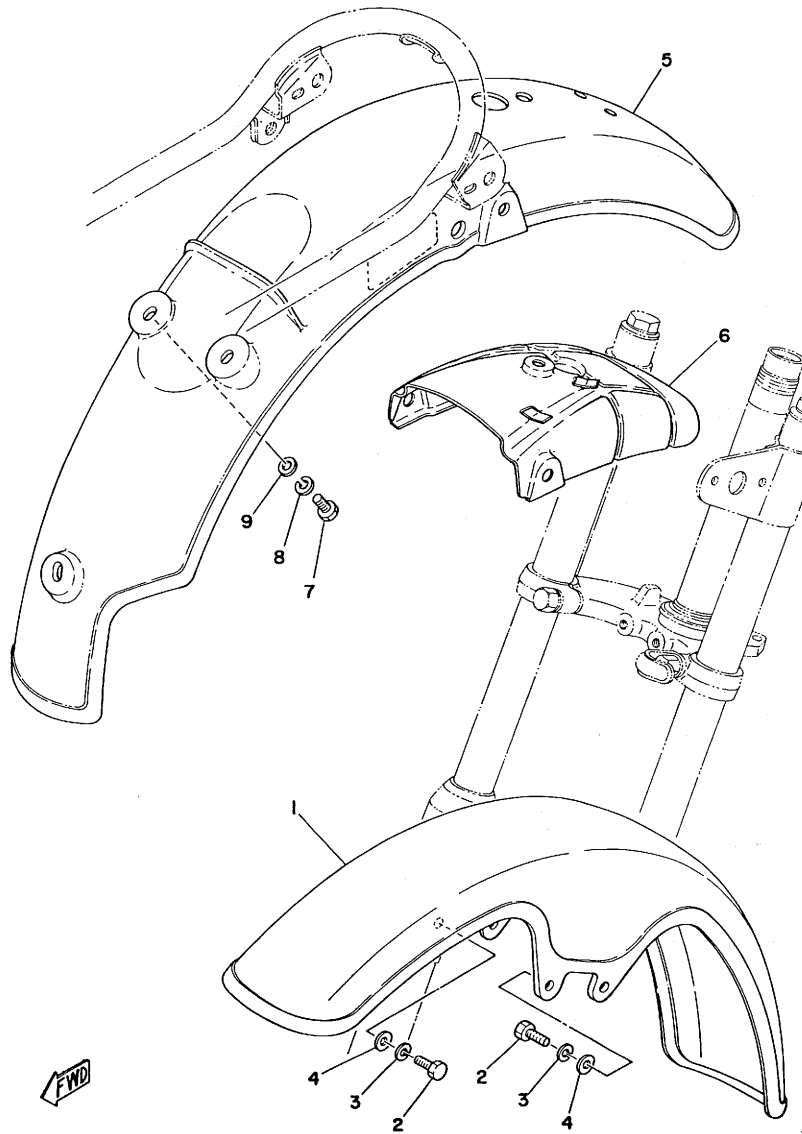
Ref. No.	Parts No.	Description	Qty	Applicable Machine No.	Remarks
16- 1	538-22110-00-35	REAR ARM COMP.	1		Silver
16- 2	102-22123-00	BUSHING, rear arm	2		
16- 3	288-22141-00	SHAFT, pivot	1		
16- 4	95301-10600	NUT, hexagon	1		
16- 5	183-22151-00	SEAL, guard	1		
16- 6	538-22311-00-35	CHAIN CASE	1		Silver
16- 7	98501-05008	SCREW, panhead	2		
16- 8	92901-05100	WASHER, spring	2		
16- 9	1N0-22210-00	REAR CUSHION ASS'Y	2		
16-10	95304-12800	NUT, hexagon	4		
16-11	90201-12175	WASHER, plate (122-22244-00)	6		

Fig. 17 STAND · FOOTREST · BRAKE PEDAL



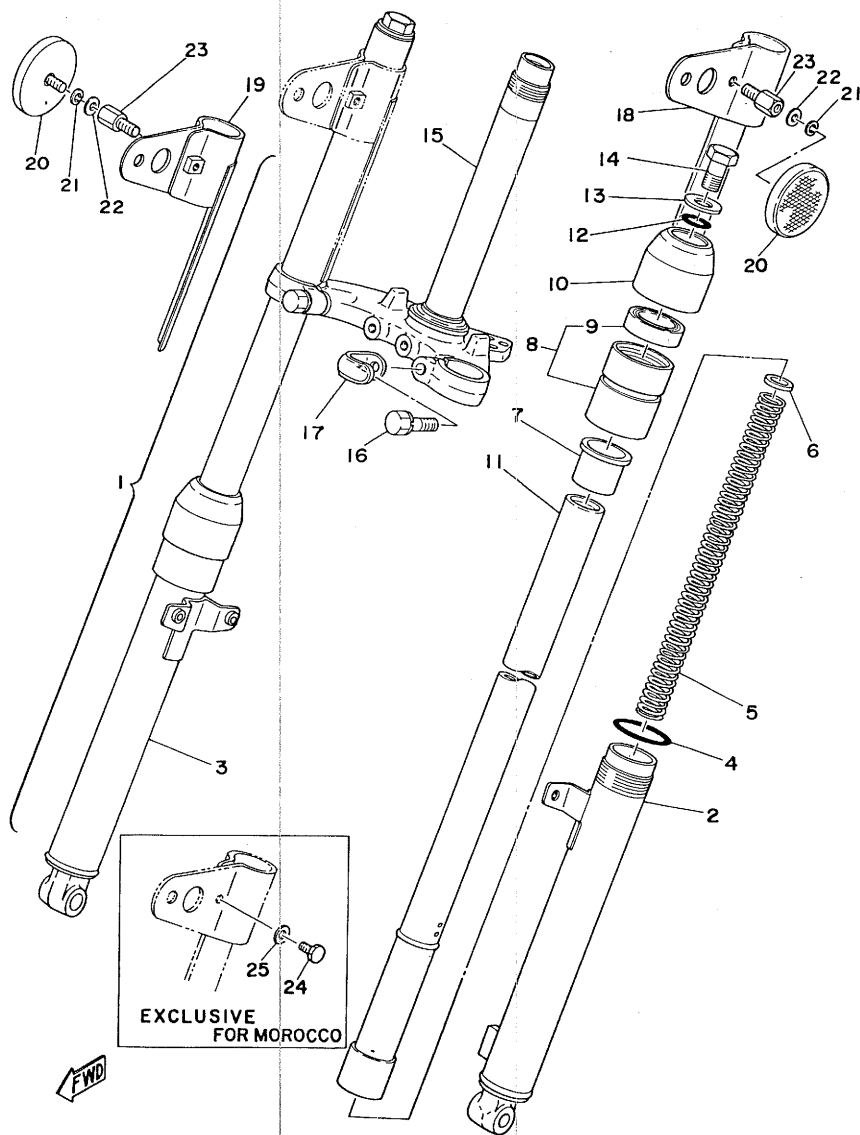
Ref. No.	Parts No.	Description	Q'ty	Applicable Machine No.	Remarks
17- 1	354-27311-00-35	STAND, side	1		Silver
17- 2	90109-08031	BOLT (137-27317-00)	1		
17- 3	95301-08700	NUT, hexagon	1		
17- 4	90506-25047	SPRING, tension (150-27316-00)	1		
17- 5	538-27451-00	FOOTREST	1		
17- 6	538-27411-00-35	FOOTREST, left	1		Silver
17- 7	538-27421-00-35	FOOTREST, right	1		Silver
17- 8	97321-08030	BOLT, hexagon	2		
17- 9	90185-08055	NUT, U	2		
17-10	97301-08020	BOLT, hexagon	1		
17-11	97301-08016	BOLT, hexagon	1		
17-12	92901-08100	WASHER, spring	2		
17-13	538-27211-00-35	PEDAL, brake	1		Silver
17-14	90508-32056	SPRING (183-27216-00)	1		
17-15	2A3-27212-00	SHAFT, brake	1		
17-16	93430-12008	CIRCLIP (E-12)	1		
17-17	180-27231-01	ROD, brake	1		
17-18	92901-06200	WASHER, plain	2		
17-19	91401-20012	PIN, cotter	1		
17-20	90501-10245	SPRING (180-27236-00)	1		
17-21	90249-12008	PIN (156-27237-00)	1		
17-22	90179-06176	NUT	1		

Fig. 18 FRONT FENDER · REAR FENDER



Ref. No.	Parts No.	Description	Q'ty	Applicable Machine No.	Remarks
18- 1	538-21511-00-36	FENDER, front	1		Clean White
18- 2	97301-06016	BOLT, hexagon	4		
18- 3	92901-06100	WASHER, spring	4		
18- 4	92901-06600	WASHER, plate	4		
18- 5	538-21611-00-36	FENDER, rear	1		Clean White
18- 6	538-21617-00	BRACKET, fender	1		
18- 7	97301-06016	BOLT, hexagon	3		
18- 8	92901-06100	WASHER, spring	3		
18- 9	90201-06067	WASHER, plate	3		

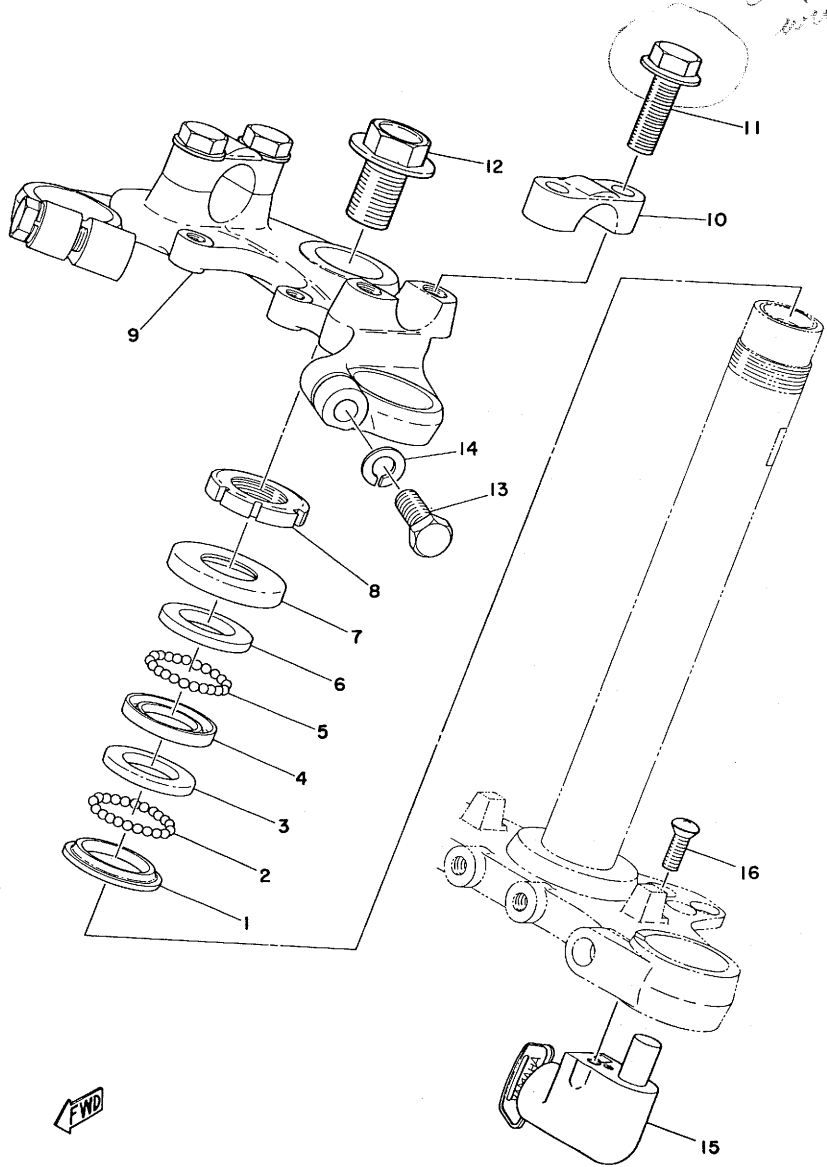
Fig. 19 FRONT FORK



Ref. No.	Parts No.	Description	Q'ty	Applicable Machine No.	Remarks
19- 1	538-23101-01	FRONT FORK ASS'Y	1		
19- 2	538-23126-00-35	. TUBE, outer left	1		Silver
19- 3	538-23136-01-35	. TUBE, outer right	1		Silver
19- 4	122-23147-00	. O-RING	2		
19- 5	354-23141-90	. SPRING, fork	2		
19- 6	276-23149-50	. WASHER, spring upper	2		
19- 7	357-23125-90	. METAL, slide	2		
19- 8	196-23150-41	. OUTER NUT COMP.	2		
19- 9	276-23145-51	. . OIL SEAL	2		
19-10	276-23144-50	. SEAL, dust	2		
19-11	538-23124-00	. TUBE, inner	2		
19-12	307-23114-00	. PACKING	2		
19-13	276-23112-50	. WASHER, cap	2		
19-14	205-23111-40	. BOLT, cap	2		
19-15	538-23340-00-35	. UNDER BRACKET COMP.	1		Silver
19-16	1M3-23346-00	. BOLT, under bracket	2		
19-17	260-23318-40	. HOLDER, wire	1		
19-18	538-84118-10	STAY, head lamp left	1		
19-19	538-84119-10	STAY, head lamp right	1		
19-20	355-85111-00	REFLECTOR	2		
19-21	92901-05100	WASHER, spring	2		} Except for Morocco
19-22	92901-05200	WASHER, plain	2		
19-23	90109-06205	BOLT (289-85119-00)	2		
19-24	97301-06014	BOLT, hexagon	2		} Exclusive for Morocco
19-25	92901-06600	WASHER, plate	2		

Fig. 20 STEERING

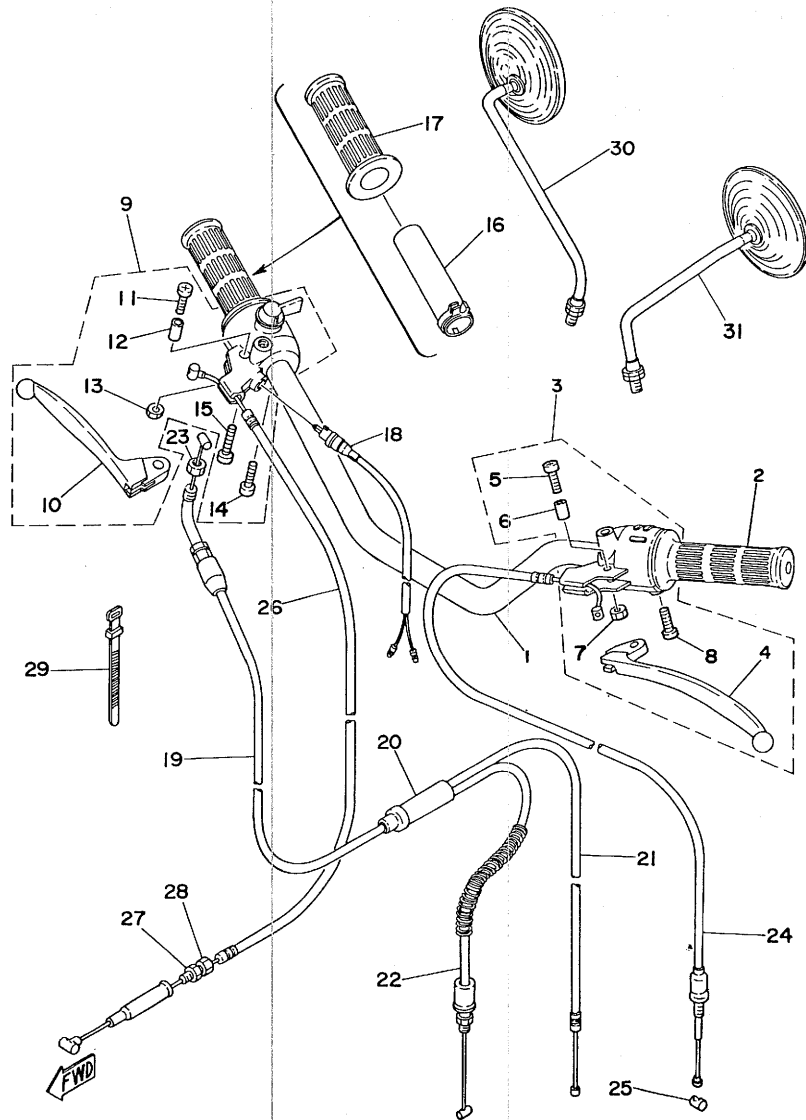
*check if make
without washers bolt **



Ref. No.	Parts No.	Description	Q'ty	Applicable Machine No.	Remarks
20- 1	156-23411-00	RACE, ball 1	1		
20- 2	93501-04011	BALL (1/4 inch)	19		
20- 3	156-23412-00	RACE, ball 2	1		
20- 4	122-23412-00	RACE, ball 2	1		
20- 5	93503-16010	BALL (3/16 inch)	22		
20- 6	122-23411-00	RACE, ball 1	1		
20- 7	122-23416-00	COVER, ball race	1		
20- 8	90179-25033	NUT (137-23454-00)	1		
20- 9	538-23435-00-35	CROWN, handle	1		Silver
20-10	1E6-23441-10-35	HOLDER, handle upper	2		Silver
✓ 20-11	95821-08035	BOLT, flange	4		
20-12	90105-14060	BOLT, washer based head hexagon	1		
20-13	97321-08030	BOLT, hexagon	2		
20-14	92901-08100	WASHER, spring	2		
20-15	1G7-23408-00	STEERING LOCK ASS'Y	1		
20-16	98601-05012	SCREW, ovalhead	2		

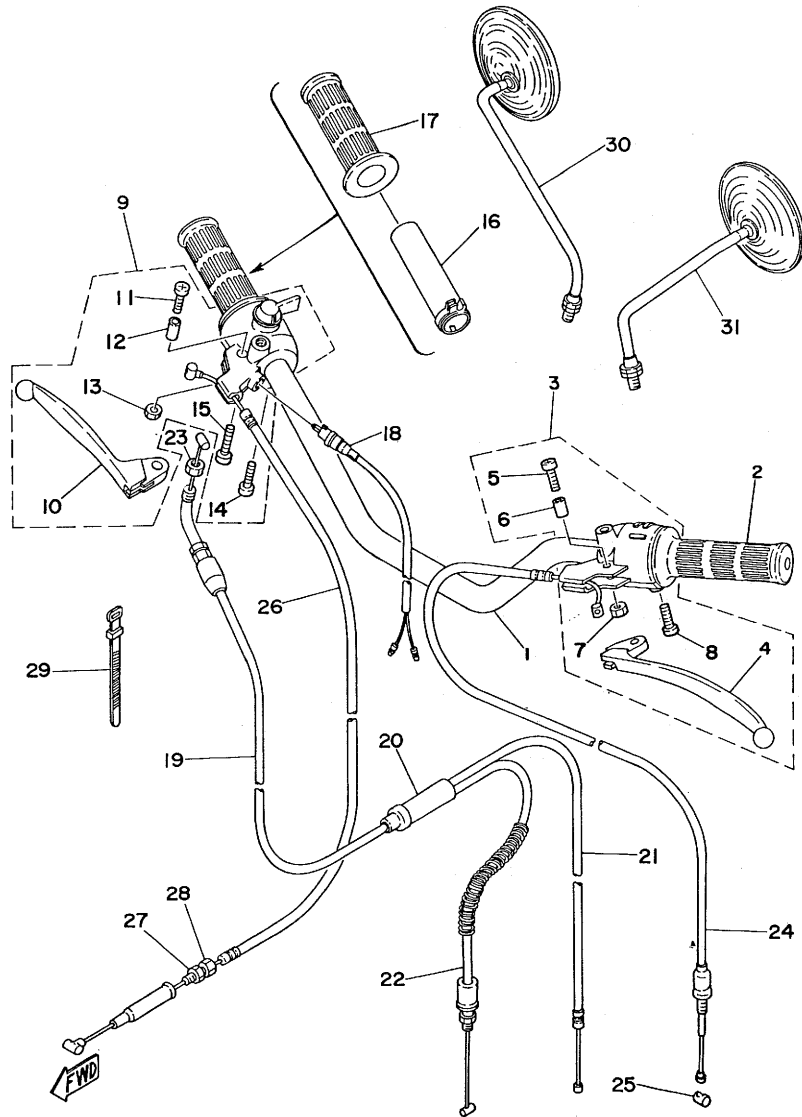
FWD

Fig. 21 HANDLE · WIRE



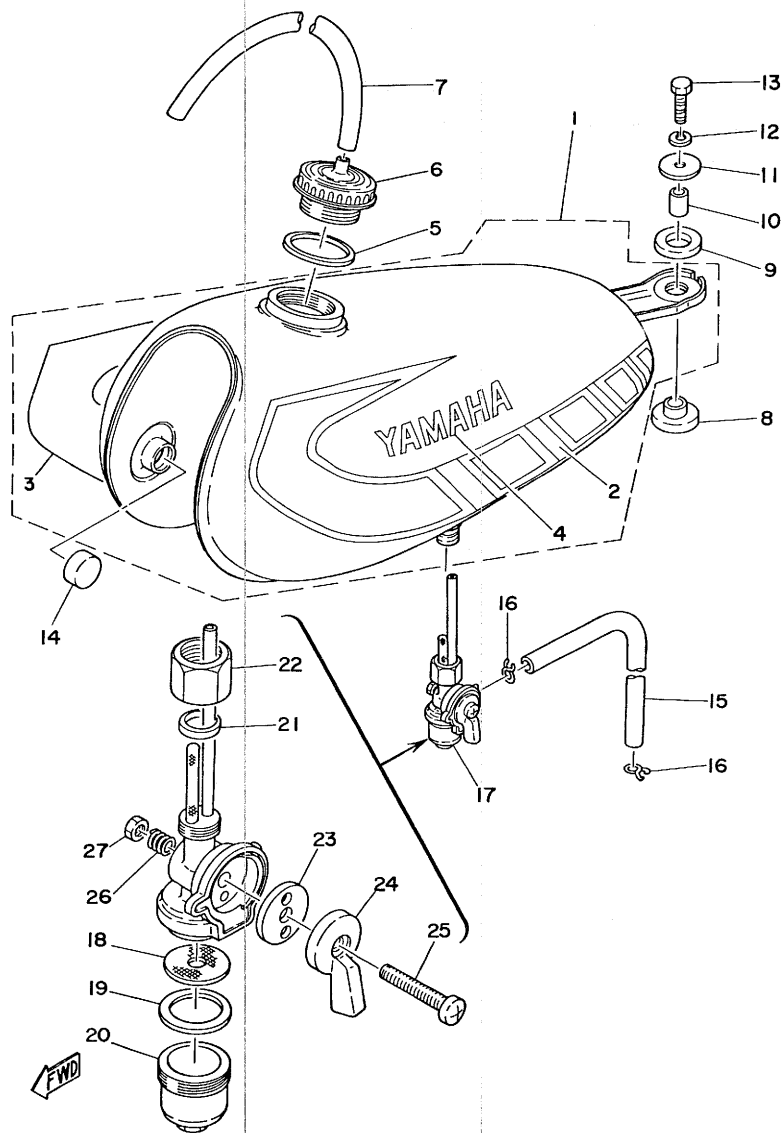
Ref. No.	Parts No.	Description	Q'ty	Applicable Machine No.	Remarks
21- 1	538-26111-00	HANDLE	1		
21- 2	353-26241-00	GRIP, left	1		
21- 3	538-82910-01	LEVER HOLDER ASS'Y, left	1		
21- 4	137-83912-02-38	. LEVER, left	1		
21- 5	98503-05022	. SCREW, panhead	1		
21- 6	137-83913-01	. COLLAR, lever	1		
21- 7	95601-05100	. NUT, U	1		
21- 8	98501-05022	. SCREW, panhead	3		
21- 9	538-82920-90	LEVER HOLDER ASS'Y, right	1		
21-10	232-83922-31-38	. LEVER, right	1		
21-11	232-83915-30	. SCREW, lever fitting	1		
21-12	137-83913-01	. COLLAR, lever	1		
21-13	95601-05100	. NUT, U	1		
21-14	98501-05022	. SCREW, panhead	1		
21-15	98501-05030	. SCREW, panhead	1		
21-16	1V1-26243-00	TUBE, guide	1		
21-17	353-26242-00	GRIP, right	1		
21-18	388-83980-30	FRONT STOP SWITCH ASS'Y	1		
21-19	353-26311-01	WIRE, throttle 1	1		
21-20	266-26261-00	CYLINDER, wire	1		
21-21	353-26312-01	WIRE, throttle 2	1		
21-22	538-26321-00	WIRE, pump	1		
21-23	90170-10038	NUT, hexagon	1		
21-24	353-26335-01	WIRE, clutch	1		
21-25	164-26363-00	END, wire	1		
21-26	354-26341-01	WIRE, brake	1		
21-27	90179-06143	NUT (109-26344-00)	1		
21-28	90123-06010	BOLT, wire adjusting	1		
21-29	168-83936-01	BAND, switch cord	2		

Fig. 21 HANDLE · WIRE



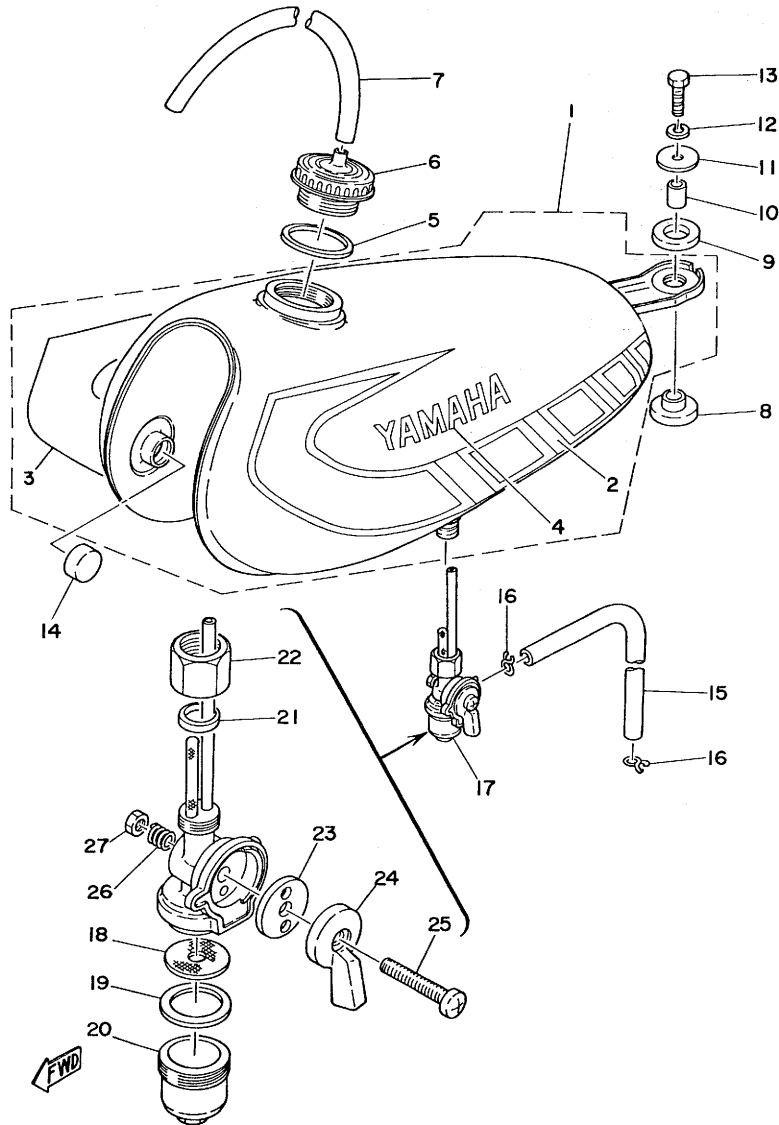
Ref. No.	Parts No.	Description	Q'ty	Applicable Machine No.	Remarks
21-30	1Y0-26290-00	BACK MIRROR ASS'Y, right	1		
	1Y0-26290-40	BACK MIRROR ASS'Y, right	1		Flat Mirror for New Zealand
21-31	1Y0-26290-10	BACK MIRROR ASS'Y, left	1		
	1Y0-26290-30	BACK MIRROR ASS'Y, left	1		Flat Mirror for New Zealand

Fig. 22 FUEL TANK



Ref. No.	Parts No.	Description	Q'ty	Applicable Machine No.	Remarks
22- 1	538-24110-00-09	FUEL TANK COMP.	1		Clean White/ Competition Light Green
	538-24110-00-X1	FUEL TANK COMP.	1		Clean White/ Chappy Red
22- 2	1F4-24244-10	. GRAPHIC, fuel tank left	1		Competition Light Green
	1F4-24244-20	. GRAPHIC, fuel tank left	1		Chappy Red
22- 3	1F4-24245-10	. GRAPHIC, fuel tank right	1		Competition Light Green
	1F4-24245-20	. GRAPHIC, fuel tank right	1		Chappy Red
22- 4	388-24161-00	. EMBLEM, fuel tank	2		
22- 5	90430-35122	GASKET	1		
22- 6	322-24611-02	BODY, cap	1		
22- 7	90445-09113	HOSE (290-24311-00)	1		
22- 8	90480-14088	GROMMET	1		
22- 9	90202-14077	WASHER, plate	1		
22-10	90387-07390	COLLAR	1		
22-11	90201-06074	WASHER, plate (248-21757-00) ...	1		
22-12	92901-06100	WASHER, spring	1		
22-13	97301-06025	BOLT, hexagon	1		
22-14	122-24181-00	DAMPER, locating l	2		
22-15	90445-09066	HOSE	1		
22-16	90467-08003	CLIP (101-24356-00)	2		
22-17	367-24500-04	FUEL COCK ASS'Y	1		
22-18	355-24515-00	. NET, filter	1		
22-19	102-24522-01	. PACKING, filter	1		
22-20	122-24521-00	. CUP, filter	1		
22-21	122-24532-00	. GASKET, nut	1		
22-22	603-24531-01	. NUT	1		
22-23	355-24523-00	. SEAL, cock lever	1		
22-24	355-24524-01	. LEVER, cock	1		
22-25	98501-05030	. SCREW, panhead	1		

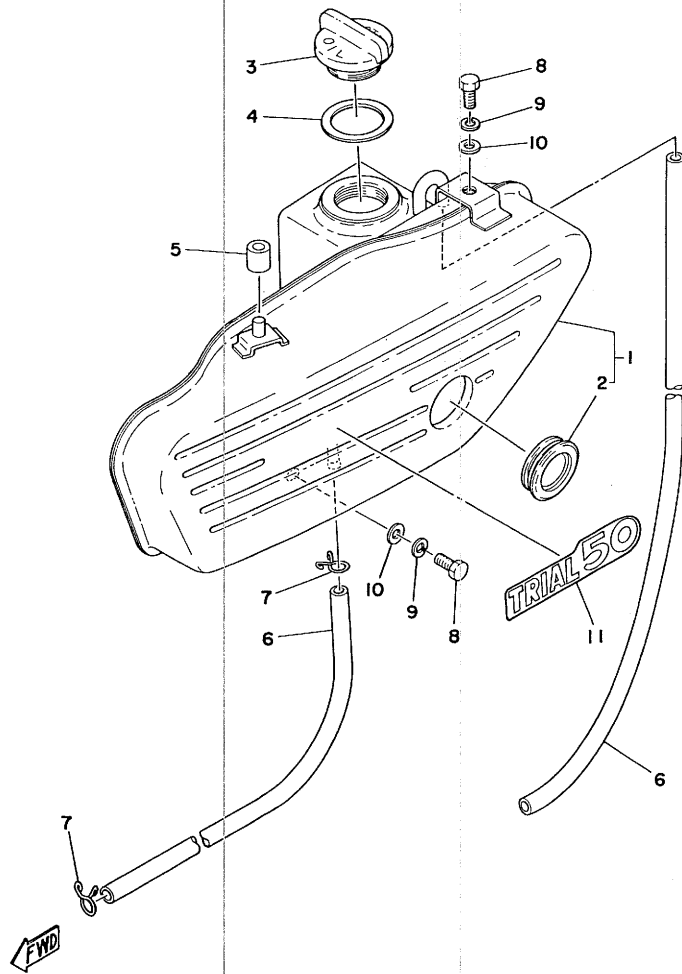
Fig. 22 FUEL TANK



Ref. No.	Parts No.	Description	Q'ty	Applicable Machine No.	Remarks
----------	-----------	-------------	------	------------------------	---------

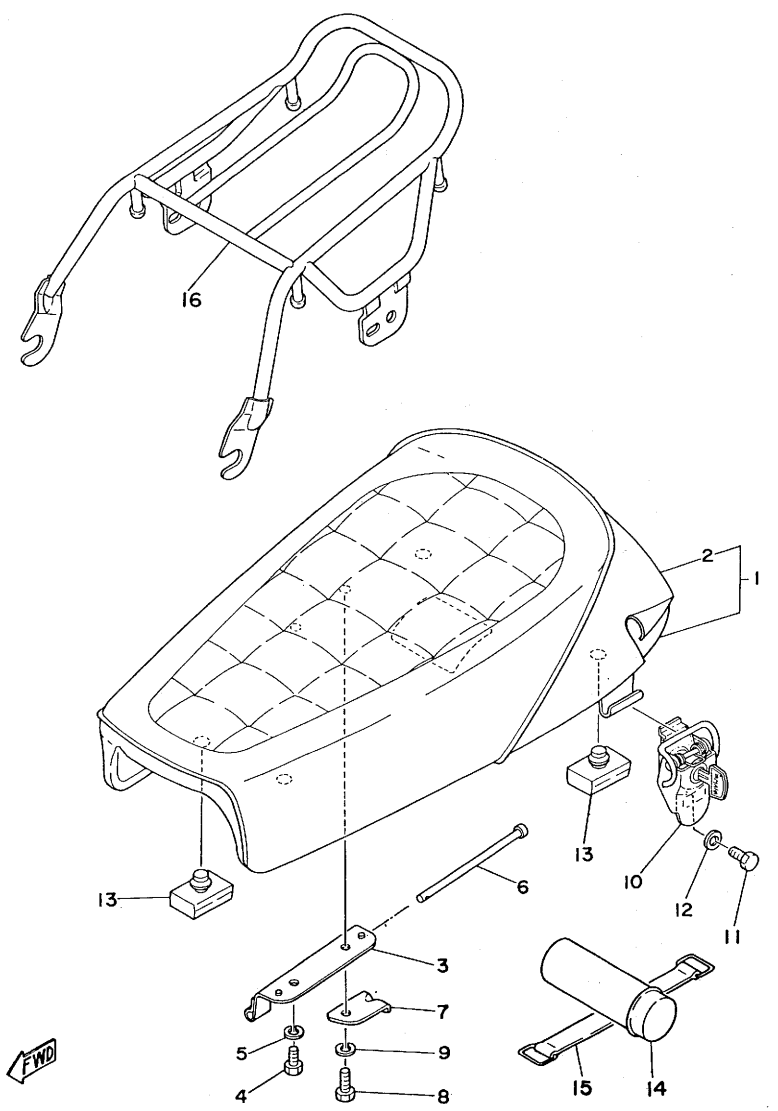
22-26	355-24518-01	. SPRING, lever	1		
22-27	95301-05600	. NUT, hexagon	1		

Fig. 23 OIL TANK



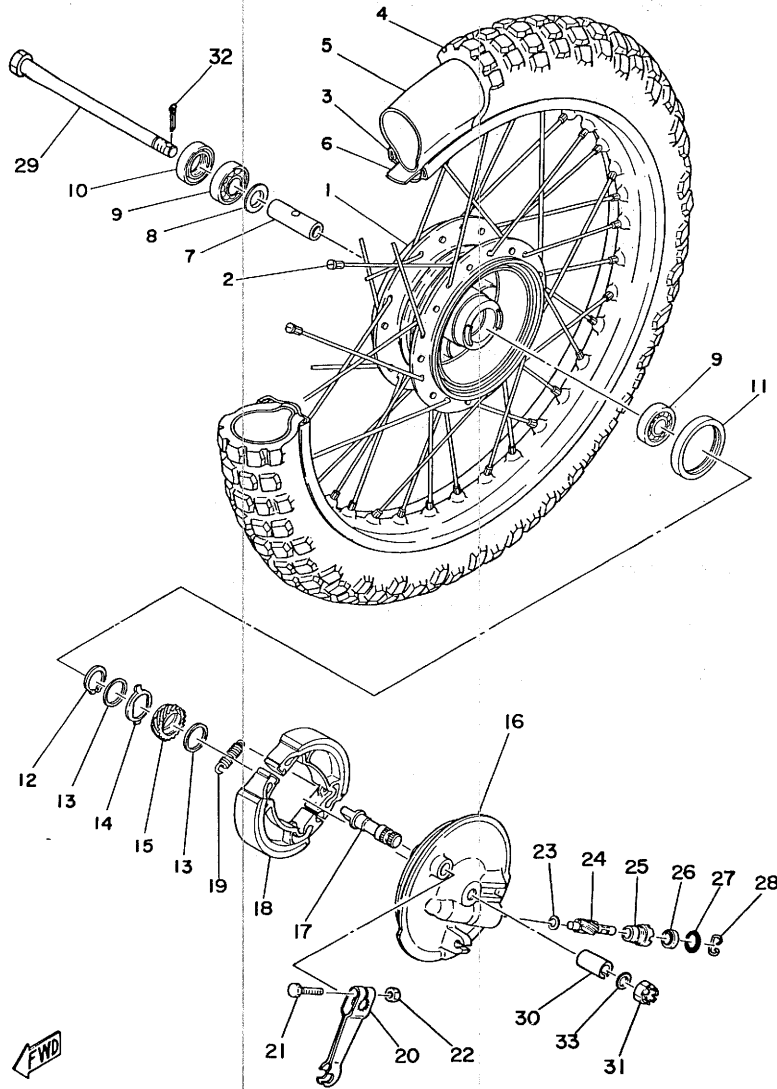
Ref. No.	Parts No.	Description	Q'ty	Applicable Machine No.	Remarks
23- 1	538-21705-00-36	OIL TANK ASS'Y	1		Clean White
23- 2	214-21761-00	. GAUGE, level	1		
23- 3	1A0-21771-00	BODY, cap	1		
23- 4	90430-27124	GASKET	1		
23- 5	353-21778-00	DAMPER, locating	1		
23- 6	90445-09110	HOSE (367-21766-00)	2		
23- 7	90467-08003	CLIP (101-24356-00)	2		
23- 8	97301-06012	BOLT, hexagon	2		
23- 9	92901-06100	WASHER, spring	2		
23-10	92901-06600	WASHER, plate	2		
23-11	538-21737-00	EMBLEM, oil tank	1		

Fig. 24 SEAT



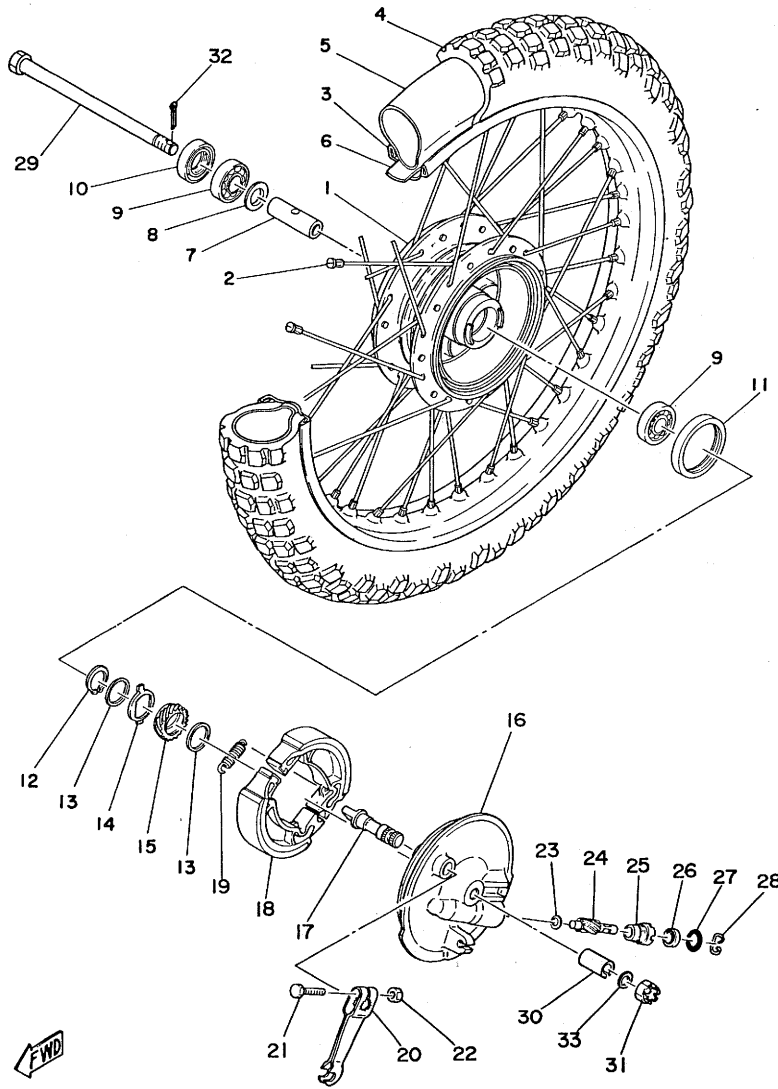
Ref. No.	Parts No.	Description	Q'ty	Applicable Machine No.	Remarks
24- 1	538-24710-90	SINGLE SEAT ASS'Y	1		
24- 2	538-24711-90	. COVER, single seat	1		
24- 3	538-24726-00	HINGE, seat	1		
24- 4	97301-06012	BOLT, hexagon	1		
24- 5	92901-06100	WASHER, spring	1		
24- 6	1K8-24774-00	PIN	1		
24- 7	538-24768-00	STOPPER, pin	1		
24- 8	97301-06012	BOLT, hexagon	1		
24- 9	92901-06100	WASHER, spring	1		
24-10	1G7-24705-00	SEAT BRACKET ASS'Y	1		
24-11	97301-06012	BOLT, hexagon	1		
24-12	92901-06600	WASHER, plate	1		
24-13	214-24724-00	DAMPER, seat	4		
24-14	296-92210-10	PORCH	1		
24-15	288-21376-00	BAND, tool	1		
24-16	538-24830-00	SUB CARRIER ASS'Y	1		

Fig. 25 FRONT WHEEL



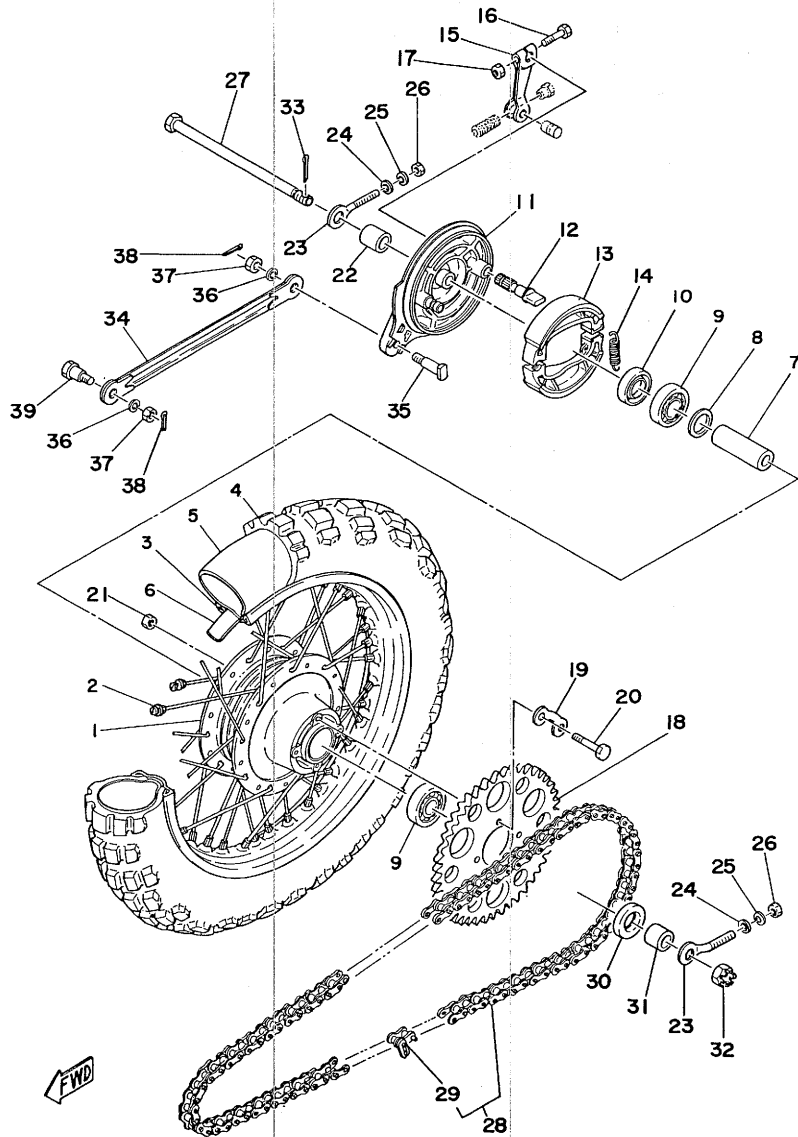
Ref. No.	Parts No.	Description	Qty	Applicable Machine No.	Remarks
25- 1	296-25111-00-35	HUB, front	1		Silver
25- 2	276-25104-00	SPOKE SET, front	1s		
25- 3	94414-18006	RIM, front (1.40-18)	1		
25- 4	94125-18170	TIRE, front (2.50-18-4PR)	1		
25- 5	94225-18076	TUBE, front (2.50-18)	1		
25- 6	94325-18043	BAND, rim (2.50-18)	1		
25- 7	296-25117-00	SPACER, bearing	1		
25- 8	195-25115-00	FLANGE, spacer	1		
25- 9	93306-30003	BEARING (B6300Z)	2		
25-10	93106-20001	OIL SEAL (DD20-35-7)	1		
25-11	93105-47007	OIL SEAL (SDD47-58-7)	1		
25-12	93410-20009	CIRCLIP (S-20)	1		
25-13	90201-20269	WASHER, plate (183-25147-00)	2		
25-14	183-25149-00	CLUTCH, meter	1		
25-15	538-25135-00	GEAR, drive	1		
25-16	538-25121-00-35	PLATE, brake shoe	1		Silver
25-17	538-25351-01	CAMSHAFT	1		
25-18	326-25330-10	BRAKE SHOE COMP.	2		
25-19	90506-16034	SPRING, tension (102-25333-00)	2		
25-20	538-25155-00	LEVER, camshaft	1		
25-21	90101-06278	BOLT, hexagon	1		
25-22	95301-06600	NUT, hexagon	1		
25-23	90201-07076	WASHER, plate (183-25146-00)	1		
25-24	538-25138-00	GEAR, meter	1		
25-25	109-25136-00	BUSHING	1		
25-26	93104-07003	OIL SEAL (SO-7-14-4)	1		
25-27	93210-14104	O-RING (2.4+13.8)	1		
25-28	102-25137-00	RING, stop	1		
25-29	353-25181-03	SHAFT, wheel	1		

Fig. 25 FRONT WHEEL



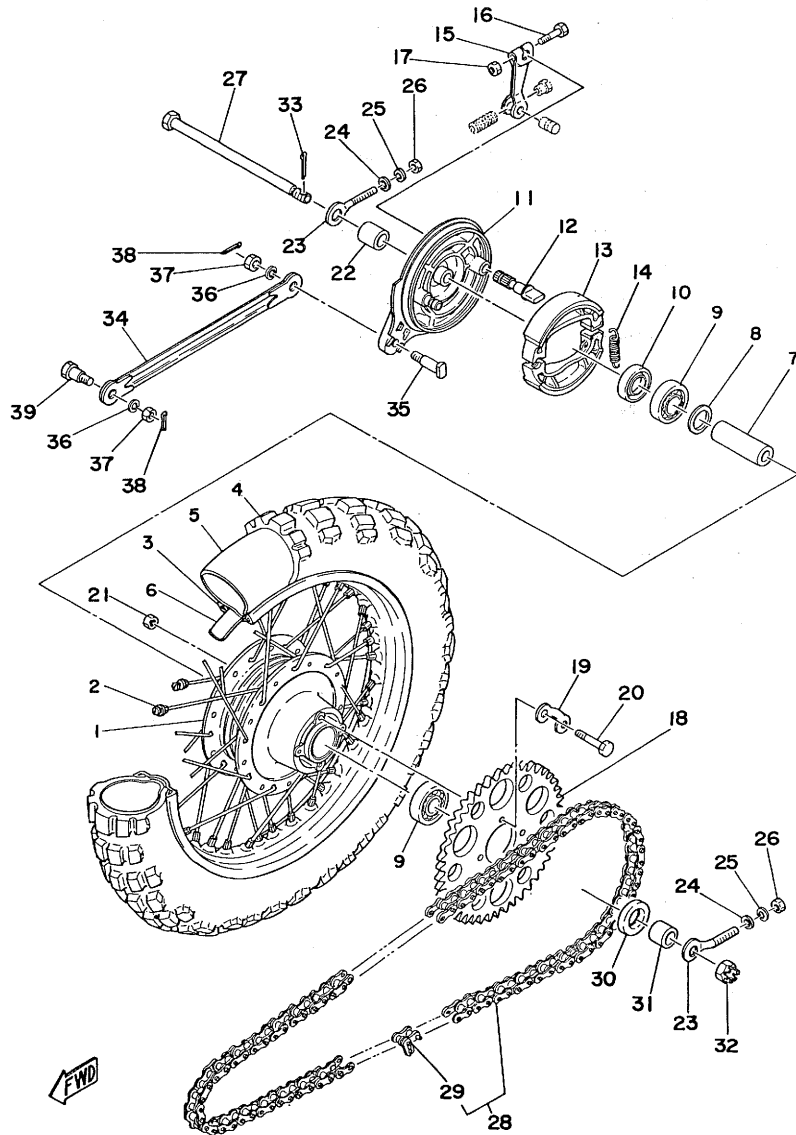
Ref. No.	Parts No.	Description	Q'ty	Applicable Machine No.	Remarks
25-30	90387-10077	COLLAR (296-25183-00)	1		
25-31	90171-10004	NUT, castle (353-25182-00)	1		
25-32	91401-20020	PIN, cotter	1		
25-33	92901-10600	WASHER, plate	1		

Fig. 26 REAR WHEEL



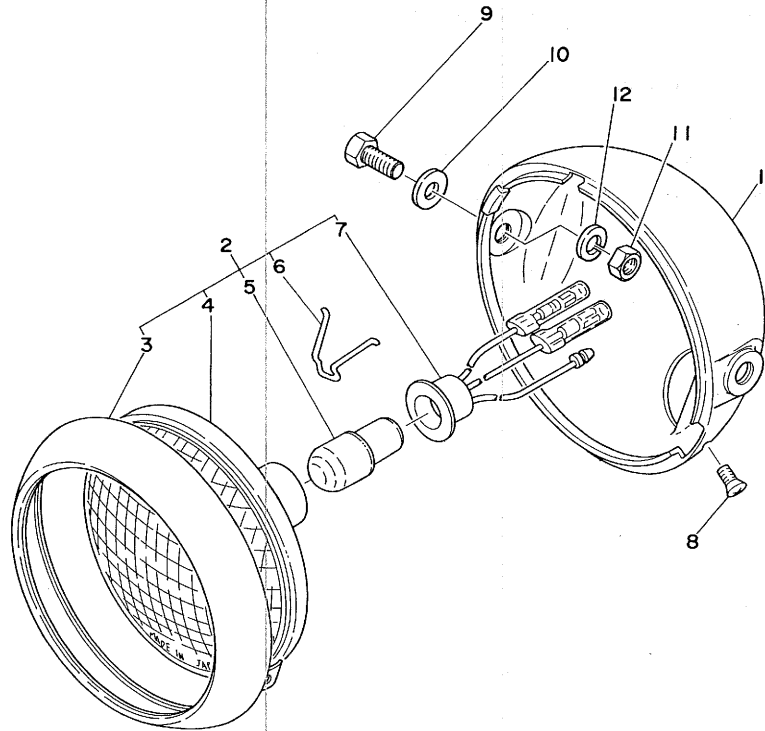
Ref. No.	Parts No.	Description	Q'ty	Applicable Machine No.	Remarks
26- 1	462-25311-01-35	HUB, rear	1		Silver
26- 2	538-25304-00	SPOKE SET, rear	1s		
26- 3	94416-16008	RIM, rear (1.60-16)	1		
26- 4	94130-16169	TIRE, rear (3.00-16 4PR)	1		
26- 5	94230-16011	TUBE, rear (3.00-16)	1		
26- 6	94325-16036	BAND, rim (2.50-16)	1		
26- 7	90560-12170	SPACER, bearing	1		
26- 8	102-25315-00	FLANGE, spacer 1	1		
26- 9	93306-30101	BEARING (B6301)	2		
26-10	93106-20002	OIL SEAL (DD-20-37-8)	1		
26-11	1M3-25321-00-35	PLATE, brake shoe	1		Silver
26-12	538-25351-01	CAMSHAFT	1		
26-13	326-25330-10	BRAKE SHOE COMP.	2		
26-14	90506-16034	SPRING (102-25333-00)	2		
26-15	538-25355-00	LEVER, camshaft	1		
26-16	90101-06278	BOLT, hexagon	1		
26-17	95301-06600	NUT, hexagon	1		
26-18	492-25447-10-33	GEAR, sprocket wheel (47T)	1	U, R	Yamaha Black
26-18	492-25448-10-33	GEAR, sprocket wheel (48T)			Yamaha Black
26-18	492-25449-10-33	GEAR, sprocket wheel (49T)			STD
26-19	101-25412-00	WASHER, lock	2		Yamaha Black
26-20	90109-08319	BOLT (109-25411-00)	4		
26-21	90170-08158	NUT, hexagon	4		
26-22	90387-12412	COLLAR (102-25383-00)	1		
26-23	102-25389-00	PULLER, chain	2		
26-24	92901-06600	WASHER, plate	2		
26-25	92901-06100	WASHER, spring	2		
26-26	95301-06600	NUT, hexagon	2		
26-27	367-25381-00	SHAFT, rear wheel	1		

Fig. 26 REAR WHEEL



Ref. No.	Parts No.	Description	Q'ty	Applicable Machine No.	Remarks
26-28	94580-13104	CHAIN (DK420M-104L)	1		
26-29	94604-20001	. JOINT, chain	1		
26-30	93104-21016	OIL SEAL (SO-21-37-7)	1		
26-31	90387-12096	COLLER (109-25377-01)	1		
26-32	90171-12005	NUT, castle	1		
26-33	91401-30022	PIN, cotter	1		
26-34	451-25371-00	BAR, tension	1		
26-35	90109-08183	BOLT (102-25373-00)	1		
26-36	92901-08100	WASHER, spring	2		
26-37	95301-08700	NUT, hexagon	2		
26-38	91401-20012	PIN, cotter	2		
26-39	90109-08368	BOLT (183-25378-00)	1		

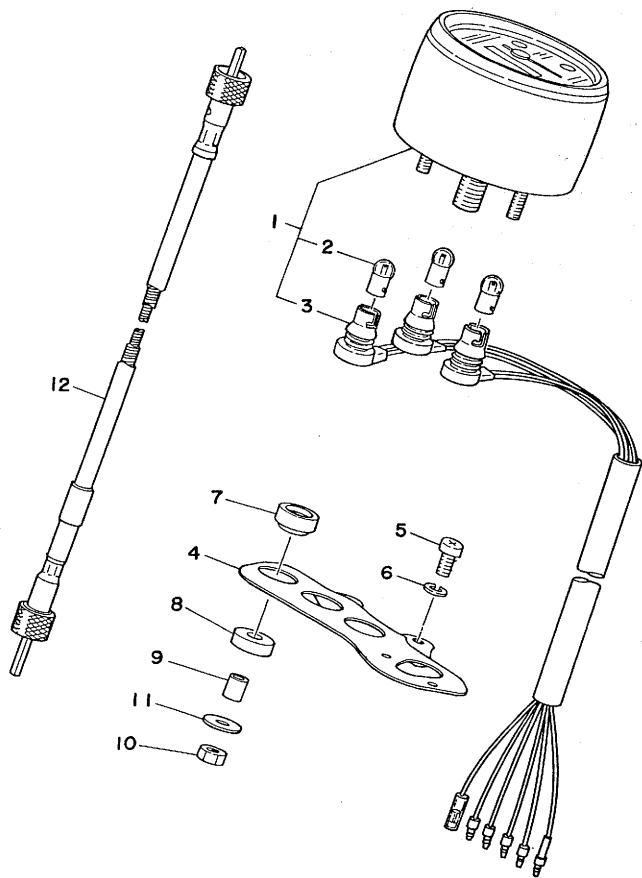
Fig. 27 HEAD LAMP



Ref. No.	Parts No.	Description	Q'ty	Applicable Machine No.	Remarks
27- 1	354-84111-00-36	BODY, head lamp	1		Clean White
	241-84311-00-36	BODY, head lamp	1		for Morocco Clean White
27- 2	482-84110-00	HEAD LAMP UNIT ASS'Y	1		
	1U0-84110-70	HEAD LAMP UNIT ASS'Y	1		for Morocco
27- 3	195-84315-01	. RIM, head lamp	1		
27- 4	195-84320-00	. LENS ASS'Y	1		
	260-84120-00	. LENS ASS'Y	1		for Morocco
27- 5	206-84114-60	. BULB, head lamp (6V-15/25W) ..	1		
	109-84114-50	. BULB, head lamp (6V-15/15W) ..	1		for Morocco
27- 6	195-84324-00	. SPRING, reflector set	3		
27- 7	317-84112-30	. SOCKET CORD ASS'Y	1		
	241-84312-00	. SOCKET CORD ASS'Y	1		for Morocco
27- 8	90152-05005	SCREW, rim fitting	1		
27- 9	97303-08020	BOLT, hexagon	2		
27-10	92903-08200	WASHER, plain	2		
27-11	95301-08600	NUT, hexagon	2		
27-12	92901-08100	WASHER, spring	2		



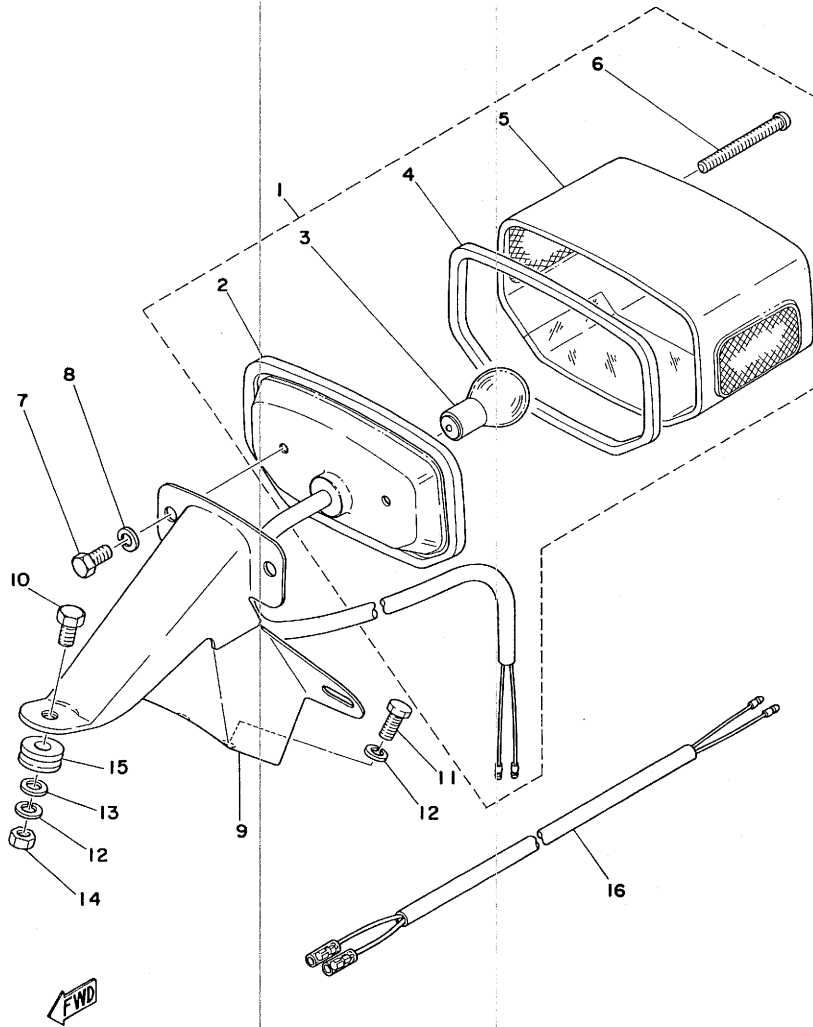
Fig. 28 SPEEDOMETER



FWD

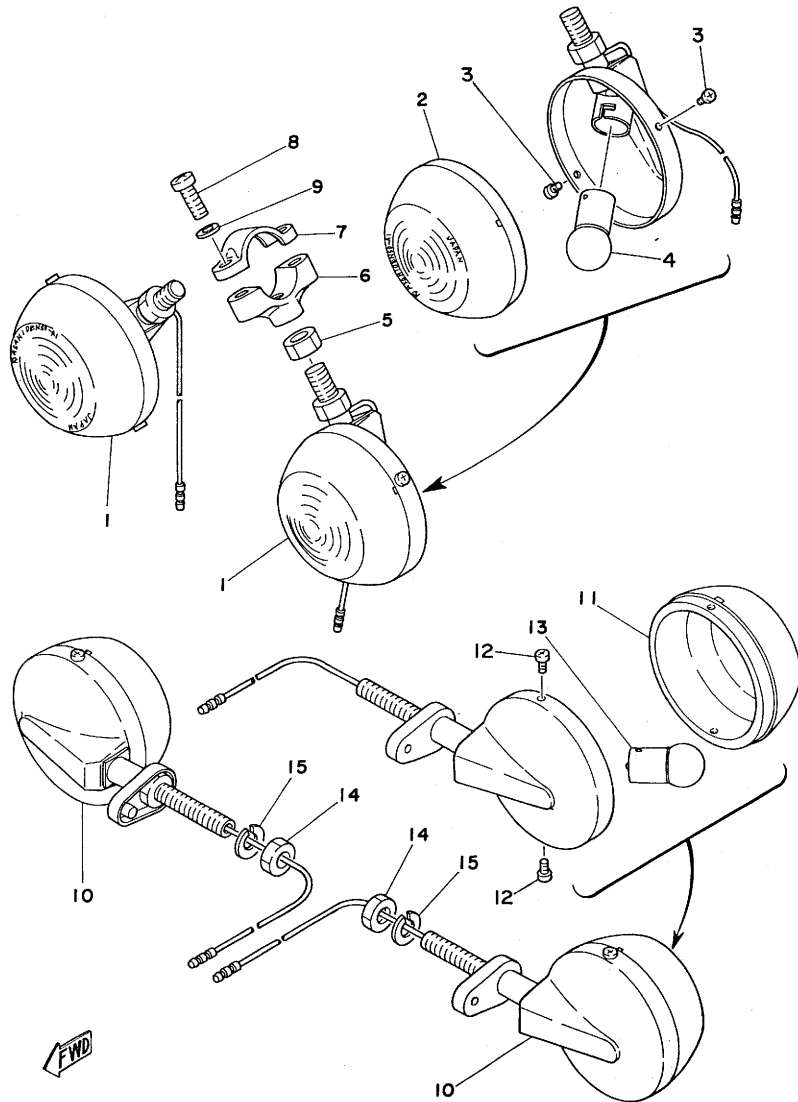
Ref. No.	Parts No.	Description	Q'ty	Applicable Machine No.	Remarks
28- 1	538-83510-11	SPEEDOMETER ASS'Y	1		
28- 2	122-83516-10	BULB (6V-3W)	3		
28- 3	538-83520-00	SOCKET CORD ASS'Y	1		
28- 4	2E7-83519-00-98	BRACKET, speedometer	1		
28- 5	97301-06014	BOLT, hexagon	2		
28- 6	92901-06100	WASHER, spring	2		
28- 7	1M3-83513-00	DAMPER 1	2		
28- 8	355-83526-00	DAMPER 2	2		
28- 9	355-83522-00	COLLAR	2		
28-10	95301-06600	NUT	2		
28-11	355-83524-00	WASHER	2		
28-12	353-83550-10	SPEEDOMETER CABLE ASS'Y	1		

Fig. 29 TAIL LAMP



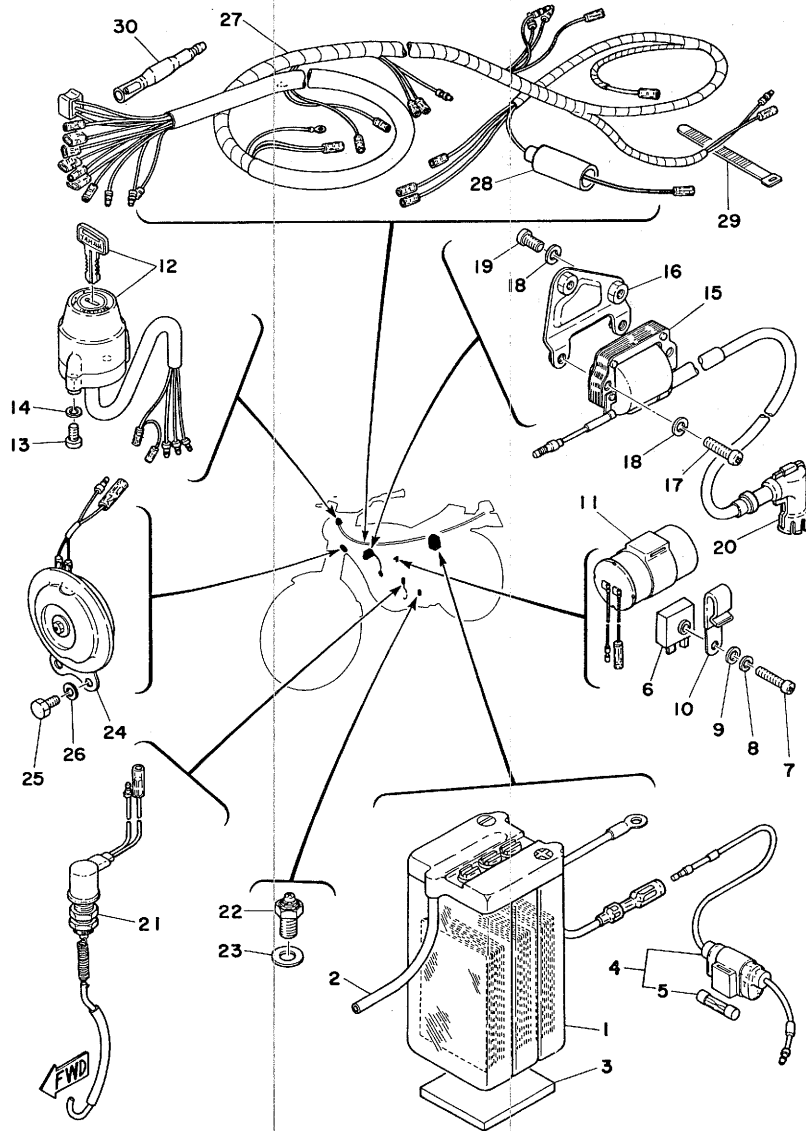
Ref. No.	Parts No.	Description	Q'ty	Applicable Machine No.	Remarks
29- 1	538-84510-00	TAIL LAMP UNIT ASS'Y 1		
29- 2	538-84511-00	. BASE, tail lamp 1		
29- 3	122-84514-00	. BULB, tail lamp (6V-10/3W)	.. 1		
29- 4	296-84523-00	. GASKET, tail lens 1		
29- 5	296-84521-00	. LENS, tail lamp 1		
29- 6	127-84524-30	. SCREW, lens fitting 2		
29- 7	92501-06012	SCREW, panhead 2		
29- 8	92901-06100	WASHER, spring 2		
29- 9	538-84551-00-35	BRACKET, license 1		Silver
29-10	97303-06016	BOLT, hexagon 1		
29-11	97301-06016	BOLT, hexagon 2		
29-12	92901-06100	WASHER, spring 3		
29-13	92903-06200	WASHER, plain 1		
29-14	95301-06600	NUT, hexagon 1		
29-15	90480-12067	GROMMET 1		
29-16	538-84517-00	CORD, tail lamp 1		

Fig. 30 FLASHER LAMP



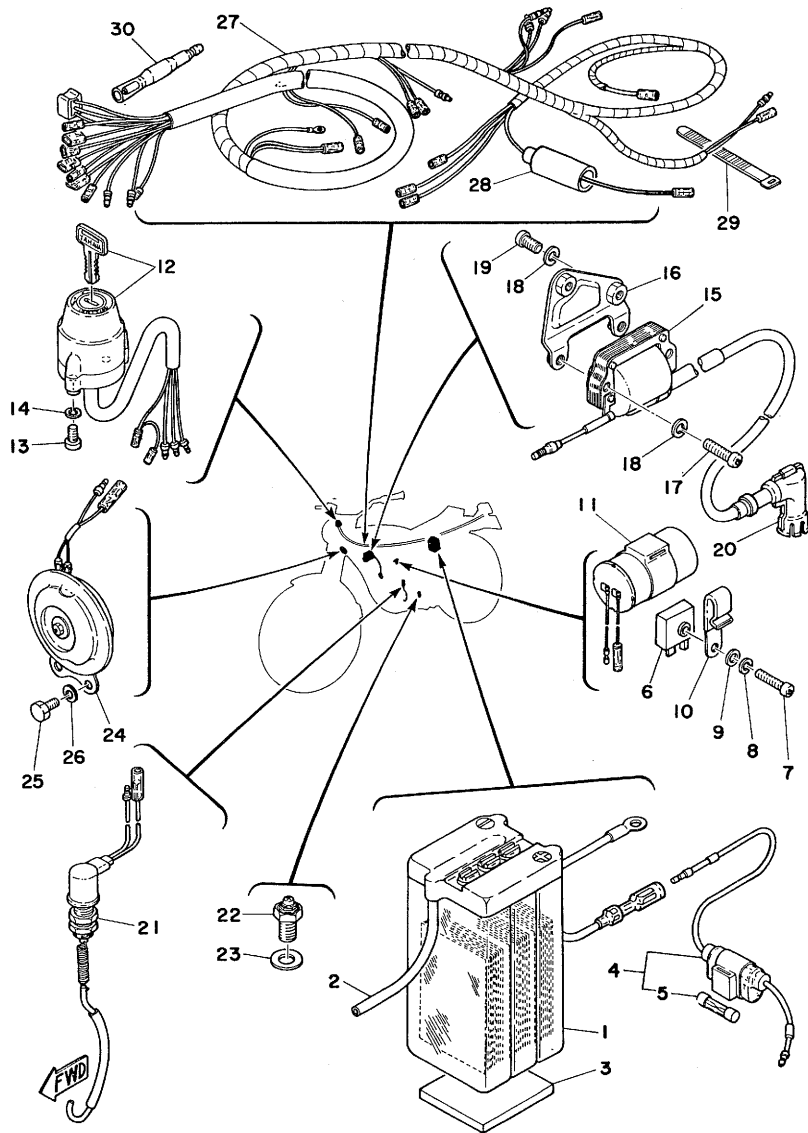
Ref. No.	Parts No.	Description	Q'ty	Applicable Machine No.	Remarks
30- 1	538-83310-N0-93	FRONT FLASHER LAMP ASS'Y	2		
30- 2	1Y1-83312-01	. LENS, flasher	2		
30- 3	2N3-83333-N0	. SCREW, lens fitting	4		
30- 4	152-83311-10	. BULB, flasher (6V-10W)	2		
30- 5	95301-08600	NUT, hexagon	2		
30- 6	437-83328-01	STAY, flasher 2	2		
30- 7	275-83318-00	STAY, flasher 1	2		
30- 8	92501-06015	SCREW, panhead	4		
30- 9	92901-06300	WASHER, tooth	4		
30-10	538-83330-N0-93	REAR FLASHER LAMP ASS'Y	2		
30-11	1Y1-83312-01	. LENS, flasher	2		
30-12	2N3-83333-N0	. SCREW, lens fitting	4		
30-13	152-83311-10	. BULB, flasher (6V-10W)	2		
30-14	95301-08600	NUT, hexagon	2		
30-15	92901-08100	WASHER, spring	2		

Fig. 31 ELECTRICAL



Ref. No.	Parts No.	Description	Q'ty	Applicable Machine No.	Remarks
31- 1	104-82110-21	BATTERY ASS'Y (6N4A-40)	1		
31- 2	90445-08172	HOSE (104-82112-00)	1		
31- 3	304-82122-00	SEAT, battery	1		
31- 4	353-82150-00	FUSE HOLDER ASS'Y	1		
31- 5	116-82151-00	FUSE (6V-10A)	1		
31- 6	482-81970-61	RECTIFIER ASS'Y	1		
31- 7	98501-05020	SCREW, panhead	1		
31- 8	92901-05100	WASHER, spring	1		
31- 9	92901-05600	WASHER, plate	1		
31-10	90465-06038	CLAMP (650-82362-00)	1		
31-11	1G7-83350-10	FLASHER RELAY ASS'Y	1		
31-12	1G4-82508-20	MAIN SWITCH ASS'Y	1		
31-13	98501-05012	SCREW, panhead	2		
31-14	92901-05100	WASHER, spring	2		
31-15	304-82310-30	IGNITION COIL ASS'Y	1	U. R	Hitachi
	2M4-82310-40	IGNITION COIL ASS'Y	1		
31-16	336-82316-01	BRACKET, ignition coil	1		
31-17	92501-06025	SCREW, panhead	2		
31-18	92901-06100	WASHER, spring	4		
31-19	92501-06012	SCREW, panhead	2		
31-20	437-82370-21	PLUG CAP ASS'Y	1		
	512-82370-10	PLUG CAP ASS'Y	1		with Noise Suppressor
31-21	353-82530-01	STOP SWITCH ASS'Y	1		
31-22	341-82540-01	NEUTRAL SWITCH ASS'Y	1		
31-23	116-82543-00	GASKET	1		
31-24	538-83371-10	HORN	1		
31-25	97301-06012	BOLT, hexagon	2		
31-26	92901-06100	WASHER, spring	2		
31-27	538-82590-20	WIRE HARNESS ASS'Y	1		

Fig. 31 ELECTRICAL



Ref. No.	Parts No.	Description	Q'ty	Applicable Machine No.	Remarks
31-28	538-82599-10	COVER, connector	1		
31-29	256-83936-00	BAND, switch cord	1		
31-30	517-81980-A0	ADJUSTER	1		

REPAIR KIT

Fig. 32 REPAIR KIT

Ref. No.	Parts No.	Description	Q'ty	Applicable Machine No.	Remarks
32- 1	353-11630-01	PISTON ASS'Y (STD)	1s		
	353-11630-11	PISTON ASS'Y (1st O.S)	1s		
	353-11630-21	PISTON ASS'Y (2nd O.S).....	1s		
32- 2	353-11631-31-96	. PISTON (STD 39.96mm)	1		Ref. No. 3-9
	353-11635-31	. PISTON (40.25mm 1st O.S)	1		
	353-11636-31	. PISTON (40.50mm 2nd O.S)	1		
32- 3	260-11601-03	. PISTON RING SET (STD)	1s		3-12
	260-11601-13	. PISTON RING SET (1st O.S)	1s		
	260-11601-23	. PISTON RING SET (2nd O.S)	1s		
32- 4	517-11633-00	. PIN, piston	1		3-10
32- 5	93450-13022	. GIRCLIP (132-11634-00)	2		3-11
32- 6	538-11650-01	CONNECTING ROD ASS'Y	1		
32- 7	538-11651-00	. ROD, connecting	1		3-4
32- 8	257-11681-00	. PIN, crank	1		3-6
32- 9	93310-41809	. BEARING, con-rod big end	1		3-5
32-10	90209-18112	. WASHER, plate (132-11685-00) ..	2		3-7
32-11	93310-11268	. BEARING, con-rod small end ...	1		3-8
32-12	538-W0001-00	GASKET KIT	1		
32-13	90430-12038	. GASKET	1		1-9
32-14	353-11351-00	. GASKET, cylinder	1		1-11
32-15	517-11181-00	. GASKET, cylinder head	1		1-13
32-16	353-15451-00	. GASKET, crankcase cover	1		2-7
32-17	93210-21190	. O-RING (2.6-20.6)	1		2-15
32-18	137-15353-00	. GASKET (14-21-15)	1		6-14
32-19	353-13621-00	. PACKING, valve seat	2		9-15
32-20	353-13556-00	. GASKET	2		9-20
32-21	93210-16290	. O-RING	1		11-2
32-22	132-14613-00	. GASKET, exhaust pipe	1		11-12
32-23	126-13116-00	. GASKET, pump case	1		12-1

Ref. No.	Parts No.	Description	Q'ty	Applicable Machine No.	Remarks
32-24	90430-04004	. GASKET (137-13187-00)	1		Ref. No. 12-18
32-25	1X7-W0003-00	OIL SEAL KIT	1		
32-26	93103-28011	. OIL SEAL (SW-28-40-8)	1		3-14
32-27	93102-20009	. OIL SEAL (SD-20-35-7)	1		3-20
32-28	93104-11028	. OIL SEAL (SO-10.5-15-3)	1		4-23
32-29	257-15389-00	. SEAL, push rod	1		5-8
32-30	92102-25017	. OIL SEAL (SD-25-40-5)	1		5-27
32-31	93101-12004	. OIL SEAL (S-12-22-5)	1		7-14
32-32	93109-15001	. OIL SEAL (SDO-15-26-6)	1		8-9
32-33	93101-10001	. OIL SEAL (S-10-21-5)	1		12-6

NUMERICAL INDEX

NUMERICAL INDEX

Part No.	Ref.No.	Part No.	Ref.No.	Part No.	Ref.No.	Part No.	Ref.No.	Part No.	Ref.No.	Part No.	Ref.No.
1A0-21771-00	23- 3	102-25315-00	26- 8	127-14143-25	10- 6	183-14197-01	10-31	257-13175-00	12- 3	296-84523-00	29- 4
1E6-23441-10-35	20-10	102-25389-00	26-23	127-14143-26	10- 6	183-22151-00	16- 5	257-15389-00	5- 8	296-92210-10	24-14
1F4-24244-10	22- 2	104-81328-20	14-14	127-14195-00	10- 4	183-25149-00	25-14	257-16324-00	4- 8	304-14171-00	10-24
1F4-24244-20	22- 2	104-82110-21	31- 1	127-84524-30	29- 6	195-25115-00	25- 8	257-17219-00	5-19	304-14261-00	10-25
1F4-24245-10	22- 3	109-25136-00	25-25	131-16321-00	4- 7	195-84315-01	27- 3	257-17461-11	5-29	304-82122-00	31- 3
1F4-24245-20	22- 3	109-84114-50	27- 5	131-16367-00	4- 6	195-84320-00	27- 4	257-17461-21	5-29	304-82310-30	31-15
1G4-82508-20	31-12	110-81345-21	13-14	132-14173-00	10-27	195-84324-00	27- 6	257-17461-31	5-29	307-23114-00	19-12
1G7-23408-00	20-15		14-15	132-14613-00	11-12	196-23150-41	19- 8	260-11601-03	3-12	314-13613-00	9-11
1G7-24705-00	24-10	110-81346-21	13- 9	132-15664-01	8-13	2A3-16150-00	4- 2	260-11601-13	3-12	314-13616-01	9-12
1G7-83350-10	31-11		14- 8	132-15676-01	8-11	2A3-16301-00	4- 1	260-11601-23	3-12	317-84112-30	27- 7
1K8-13101-01	12-11	110-81347-21	13-12	132-16346-00	4-26	2A3-27212-00	17-15	260-14142-20	10- 2	322-24611-02	22- 6
1K8-24774-00	24- 6		14-12	132-18113-01	7-10	2E7-83519-00-98	28- 4	260-23318-40	19-17	326-25330-10	25-18
1K8-81300-10	13- 1	110-81348-21	13- 7	134-14116-03	10-12	2M4-82310-40	31-15	260-84120-00	27- 4		26-13
1K8-81313-10	13- 5		14- 6	137-13137-00-03	12-12	2N3-83333-N0	30- 3	266-26261-00	21-20	336-82316-01	31-16
1K8-81350-10	13- 3	116-81331-20	14-11	137-13137-00-05	12-12		30-12	275-83318-00	30- 7	341-82540-01	31-22
1M3-23346-00	19-16	116-82151-00	31- 5	137-13137-00-10	12-12	205-23111-40	19-14	276-15610-01-93	8- 1	353-11111-01-94	1-14
1M3-25321-00-35	26-11	116-82543-00	31-23	137-13138-01	12-13	206-84114-60	27- 5	276-23112-50	19-13	353-11311-00	1-12
1M3-83513-00	28- 7	117-15644-00	8-15	137-13176-00	12- 5	207-81321-11	13- 8	276-23144-50	19-10	353-11351-00	1-11
1N0-22210-00	16- 9	122-15612-02	8- 2	137-15353-00	6-14	207-81326-10	13-10	276-23145-51	19- 9	353-11630-01	32- 1
1U0-84110-70	27- 2	122-16164-00	4- 4	137-16356-00	4-14	207-81331-10	13-11	276-23149-50	19- 6	353-11630-11	32- 1
1V1-26243-00	21-16		4-16	137-83912-02-38	21- 4	214-18178-00	7- 7	276-25104-00	25- 2	353-11630-21	32- 1
1X7-W0003-00	32-25	122-23147-00	19- 4	137-83913-01	21- 6	214-18531-00	6-20	278-13552-02	9-17	353-11631-31-96	3- 9
1Y0-26290-00	21-30	122-23411-00	20- 6		21-12	214-18561-00	6- 6	288-21376-00	15- 9	353-11631-31-98	3- 9
1Y0-26290-10	21-31	122-23412-00	20- 4	152-14174-00	10-29	214-21761-00	23- 2		24-15	353-11631-31-99	3- 9
1Y0-26290-30	21-31	122-23416-00	20- 7	152-83311-10	30- 4	214-24724-00	24-13	288-22141-00	16- 3	353-11635-31	3- 9
1Y0-26290-40	21-30	122-24181-00	22-14		30-13	232-83915-30	21-11	296-25111-00-35	25- 1	353-11636-31	3- 9
1Y1-83312-01	30- 2	122-24521-00	22-20	156-14135-00	10-30	232-83922-31-38	21-10	296-25117-00	25- 7	353-13178-00	12- 8
	30-11	122-24532-00	22-21	156-15618-01	8- 6	241-16341-01	4-21	296-81309-10	13- 2	353-13552-01	12-21
101-25412-00	26-19	122-83516-10	28- 2	156-23411-00	20- 1	241-84311-00-36	27- 1	296-81309-20	14- 2	353-13555-00	9-21
102-14122-00	10-23	122-84514-00	29- 3	156-23412-00	20- 3	241-84312-00	27- 7	296-81312-21	14- 4	353-13556-00	9-20
102-18137-00-10	5-24	126-13116-00	12- 1	164-26363-00	21-25	248-13174-00	12-25	296-81325-20	14- 9	353-13565-00	9-16
102-22123-00	16- 2	127-14124-20	10-19	168-83936-01	21-29	248-15668-00	8-18	296-81332-10	13- 6	353-13610-01	9-10
102-24522-01	22-19	127-14134-00	10-22	180-27231-01	17-17	256-83936-00	31-29	296-81332-20	14-10	353-13621-00	9-15
102-25137-00	25-28	127-14143-24	10- 6	183-14196-00	10-32	257-11681-00	3- 6	296-84521-00	29- 5	353-14112-20	10-11

NUMERICAL INDEX

Part No.	Ref.No.	Part No.	Ref.No.	Part No.	Ref.No.	Part No.	Ref.No.	Part No.	Ref.No.	Part No.	Ref.No.
353-14123-00	10-21	353-17221-00	5-15	354-27311-00-35	17- 1	492-15387-00	1-21	538-23435-00-35	20- 9	538-84511-00	29- 2
353-14126-00	10-16	353-17231-00	5-16	354-84111-00-36	27- 1	492-25447-10-33	26-18	538-24110-00-X1	22- 1	538-84517-00	29-16
353-14131-00	10-15	353-17241-00	5-17	355-24515-00	22-18	492-25448-10-33	26-18	538-24110-00-09	22- 1	538-84551-00-35	29- 9
353-14137-00	10-13	353-17251-00	5-13	355-24518-01	22-26	492-25449-10-33	26-18	538-24710-90	24- 1	598-17421-00	5-12
353-14138-00	10-28	353-17410-10	5- 1	355-24523-00	22-23	512-82370-10	31-20	538-24711-90	24- 2	603-24531-01	22-22
353-14158-00	10-17	353-17411-10	5- 2	355-24524-01	22-24	517-11181-00	1-13	538-24726-00	24- 3	802-14161-00	10-18
353-14181-06	10-10	353-17471-00	5-10	355-83522-00	28- 9	517-11633-00	3-10	538-24768-00	24- 7	802-14169-00	10-20
353-14184-00	10- 9	353-18101-00	7- 8	355-83524-00	28-11	517-81980-A0	31-30	538-24830-00	24-16	90101-06278	25-21
353-14185-01	10- 7	353-18111-00-93	7- 9	355-83526-00	28- 8	538-W0001-00	32-12	538-25121-00-35	25-16		26-16
353-14186-00	10- 8	353-18120-00	7- 1	355-85111-00	19-20	538-11400-01	3- 1	538-25135-00	25-15	90105-14060	20-12
353-14190-12	10- 3	353-18141-01	6- 2	357-23125-90	19- 7	538-11650-01	32- 6	538-25138-00	25-24	90109-06205	19-23
353-15111-00	1- 1	353-18511-01	6- 8	367-13146-01	12-14	538-11651-00	3- 4	538-25155-00	25-20	90109-08031	17- 2
353-15121-02	1- 2	353-18512-01	6-18	367-13174-00	2-16	538-14101-00	10- 1	538-25304-00	26- 2	90109-08183	26-35
353-15361-00	2-17	353-18513-01	6-19	367-14451-01	9- 2	538-14411-01	9- 1	538-25351-01	25-17	90109-08319	26-20
353-15362-00	2-14	353-18540-01	6- 1	367-15378-00	9-25	538-14412-01	9- 3		26-12	90109-08368	26-39
353-15411-00-Y4	2- 1	353-18547-00	6-16	367-18197-00	7- 2	538-14453-01	9- 6	538-25355-00	26-15	90109-14485	6-13
353-15415-00-Y4	2- 2	353-18562-00	6-11	367-24500-04	22-17	538-14610-00	11- 1	538-26111-00	21- 1	90113-06013	4-20
353-15416-00-Y4	2-12	353-21778-00	23- 5	367-25381-00	26-27	538-14718-00-36	11- 7	538-26321-00	21-22	90116-06026	1-10
353-15421-00-Y4	2- 6	353-25181-03	25-29	368-81311-10	13- 4	538-14752-00	11- 4	538-27211-00-35	17-13	90119-05001	4-10
353-15437-02	2- 9	353-26241-00	21- 2	368-81328-10	13-13	538-14753-01	11- 3	538-27411-00-35	17- 6	90123-06010	21-28
353-15451-00	2- 7	353-26242-00	21-17	388-24161-00	22- 4	538-21110-01-35	15- 1	538-27421-00-35	17- 7	90149-08094	7- 5
353-15641-00	8-17	353-26311-01	21-19	388-83980-30	21-18	538-21511-00-36	18- 1	538-27451-00	17- 5	90152-05005	27- 8
353-15651-00	5-23	353-26312-01	21-21	420-11412-00	3- 2	538-21611-00-36	18- 5	538-82590-20	31-27	90170-08158	26-21
353-15660-02	8- 8	353-26335-01	21-24	420-11422-00	3- 3	538-21617-00	18- 6	538-82599-10	31-28	90170-10038	21-23
353-16111-01	3-16	353-28100-11	15- 8	437-81321-20	14- 7	538-21705-00-36	23- 1	538-82910-01	21- 3	90170-12060	4-13
353-16351-00	4- 9	353-81300-21	14- 1	437-82370-21	31-20	538-21737-00	11-11	538-82920-90	21- 9	90170-12175	3-23
353-16357-00	4-18	353-81313-20	14- 5	437-83328-01	30- 6		23-11	538-83310-N0-93	30- 1	90171-10004	25-31
353-16371-00	4- 5	353-81315-20	14-13	439-14136-01	10-14	538-22110-00-35	16- 1	538-83330-N0-93	30-10	90171-12005	26-32
353-16396-00	4-22	353-81350-20	14- 3	439-14141-12	10- 5	538-22311-00-35	16- 6	538-83371-10	31-24	90179-06143	21-27
353-17121-11	5- 6	353-82150-00	31- 4	451-16342-00	4-25	538-23101-01	19- 1	538-83510-11	28- 1	90179-06176	17-22
353-17131-00	5- 5	353-82530-01	31-21	451-25371-00	26-34	538-23124-00	19-11	538-83520-00	28- 3	90179-12181	5-31
353-17141-12	5- 3	353-83550-10	28-12	462-25311-01-35	26- 1	538-23126-00-35	19- 2	538-84118-10	19-18	90179-12244	3-18
353-17151-00	5- 7	354-23141-90	19- 5	482-81970-61	31- 6	538-23136-01-35	19- 3	538-84119-10	19-19	90179-25033	20- 8
353-17211-01	5-18	354-26341-01	21-26	482-84110-00	27- 2	538-23340-00-35	19-15	538-84510-00	29- 1	90185-08055	17- 9

NUMERICAL INDEX

Part No.	Ref.No.	Part No.	Ref.No.	Part No.	Ref.No.	Part No.	Ref.No.	Part No.	Ref.No.	Part No.	Ref.No.
90201-06067	18- 9	90430-35122	22- 5	91401-20020	25-32	92901-06100	9-19	92903-06200	29-13	93430-10016	7-12
90201-06074	22-11	90445-05217	12-23	91401-25017	6-10		9-23	92903-08200	27-10	93430-12008	17-16
90201-07076	25-23	90445-08172	31- 2	91401-30022	26-33		11- 6	93101-10001	12- 6	93440-10028	8- 5
90201-08624	12- 2	90445-09066	22-15	91810-02014	2- 8		18- 3	93101-12004	7-14	93440-12026	6- 4
90201-10135	12- 7	90445-09110	23- 6	91830-21014	1- 7		18- 8	93102-20009	3-20	93440-16030	5- 4
90201-12175	16-11	90445-09113	22- 7	91830-22016	1- 3		22-12	93102-25017	5-27		5-14
90201-12535	3-21	90460-33087	9- 7	92501-06010	9- 4		23- 9	93103-28011	3-14	93450-13022	3-11
90201-12575	7-13	90460-49034	9- 8		11- 5		24- 5	93104-07003	25-26	93501-04011	20- 2
90201-13202	5-21	90465-06038	31-10	92501-06012	5-11		24- 9	93104-11028	4-23	93503-16010	4-17
90201-20269	25-13	90467-08003	22-16		29- 7		26-25	93104-21016	26-30		20- 5
90202-05005	11-10		23- 7		31-19		28- 6	93105-47007	25-11	93505-32002	12-19
90202-06010	11- 9	90468-02033	12-22	92501-06015	4-24		29- 8	93106-20001	25-10	93603-22028	12- 4
90202-14077	22- 9		12-24		30- 8		29-12	93106-20002	26-10	93604-08071	6- 3
90206-15021	5-22	90468-26038	8-16	92501-06020	2- 3		31-18	93109-15001	8- 9	93604-10011	6- 5
90208-12015	3-17	90480-12067	29-15	92501-06025	1- 6		31-26	93210-14104	25-27	93606-14081	6- 9
	4-12	90480-14088	22- 8		2-13	92901-06200	1-16	93210-16290	11- 2	93901-12100	3-22
90209-10108	8- 4	90501-02217	12-20		9-18		1-20	93210-21190	2-15	94125-18170	25- 4
90209-18112	3- 7	90501-09292	6-15		31-17		9- 5	93210-98202	4- 3	94130-16169	26- 4
90215-13019	5-30	90501-10245	17-20	92501-06030	2- 5		9-24	93306-20303	5- 9	94225-18076	25- 5
90249-12008	17-21	90501-20125	4-11		2-11		17-18	93306-20418	3-13	94230-16011	26- 5
90280-03017	3-24	90504-18005	8- 3	92501-06040	2-10	92901-06300	30- 9		3-19	94325-16036	26- 6
90282-05005	3-25	90506-07066	4-27	92501-06045	2- 4	92901-06600	18- 4	93306-30003	25- 9	94325-18043	25- 6
90334-12009	6-17	90506-16034	25-19	92501-06050	1- 4		19-25	93306-30101	26- 9	94414-18006	25- 3
90338-16029	1-18		26-14	92501-06055	1- 5		23-10	93306-30301	5-26	94416-16008	26- 3
90340-12005	1- 8	90506-25047	17- 4	92701-06012	6-12		24-12	93310-11268	3- 8	94580-13104	26-28
90387-07390	22-10	90508-26136	8-12	92901-03100	9-13		26-24	93310-41809	3- 5	94604-20001	26-29
90387-10077	25-30	90508-32054	7- 3	92901-04100	10-34	92901-08100	15- 6	93410-12003	5-25	94701-00040	1-17
90387-12096	26-31	90508-32056	17-14	92901-05100	12-15		17-12	93410-13004	5-20	95301-05600	12-16
90387-12412	26-22	90560-12170	26- 7		16- 8		20-14	93410-15005	8-10		22-27
90387-17137	5-28	90560-17123	4-15		19-21		26-36	93410-20009	25-12	95301-06600	1-15
90387-20170	3-15	91316-06025	9-22		31- 8		27-12	93410-25017	8-14		25-22
90430-04004	12-18	91401-16015	10-26		31-14		30-15	93430-08006	12- 9		26-17
90430-12038	1- 9	91401-20012	17-19	92901-05200	19-22	92901-08600	11-14	93430-10016	6-21		26-26
90430-27124	23- 4		26-38	92901-05600	31- 9	92901-10600	25-33		7- 4		28-10

NUMERICAL INDEX

Part No.	Ref.No.	Part No.	Ref.No.	Part No.	Ref.No.	Part No.	Ref.No.	Part No.	Ref.No.	Part No.	Ref.No.
95301-06600	29-14	97303-06016	29-10								
95301-06700	4-19	97303-08020	27- 9								
95301-08600	7- 6	97311-06025	8- 7								
	27-11	97321-06020	7-11								
	30- 5	97321-08030	17- 8								
	30-14		20-13								
95301-08700	17- 3	98501-05008	16- 7								
	26-37	98501-05012	31-13								
95301-10600	16- 4	98501-05016	12-10								
95304-12800	16-10	98501-05020	31- 7								
95601-05100	21- 7	98501-05022	21- 8								
	21-13		21-14								
95601-08100	15- 7	98501-05030	21-15								
95701-08100	15- 5		22-25								
95811-08155	15- 4	98502-04014	10-33								
95821-08035	20-11	98503-05022	21- 5								
95821-08090	15- 3	98512-03008	9-14								
95821-08120	15- 2	98601-05012	20-16								
97301-06010	1-19	98701-05012	6- 7								
	9- 9	98701-05015	13-15								
97301-06012	23- 8		14-16								
	24- 4	98901-04008	12-17								
	24- 8	98903-06010	11- 8								
	24-11										
	31-25										
97301-06014	19-24										
	28- 5										
97301-06016	18- 2										
	18- 7										
	29-11										
97301-06025	22-13										
97301-08016	11-13										
	17-11										
97301-08020	17-10										

